



QUALITY POLICY

ALUMITEK designs, manufactures and distributes high quality supplies for structural engineering. Securing these means, being the best provider selected by the costumer according to their needs and requirements. The total satisfaction of each costumer deserves our highest commitment, turns their expectations into our number one priority.

MISSION

ALUMITEK offers an innovative experience in industrial supplies by providing essential elements such as:

high-quality products, optimal solutions on all given requirements, personalized and professional service, the fastest response and efficient delivery time and of course, the lowest cost.

VISION

ALUMITEK'S aim is to be the leading company on structural design technologies, exceeding through continuous improvement in processes, products and services. Alumitek aims to be a natural costumer's provider due to these company's high quality standards.

INDEX

METRIC ALUMINUM PROFILES PAGE 6

PROFILE 20X20	6	PROFILE 45X45	8
PROFILE 25X25	6	PROFILE 45X90	8
PROFILE 30X30	6	PROFILE 45 FINISHED EDGES	8
PROFILE 30X30R	7	PROFILE 60X60	9
PROFILE 40X40	7	PROFILE 90X90	9
PROFILE 40X80	7		

ACCESORIES PAGE 10

GUSSETS	11	TRANSPORT & BASE PLATE	16
END CAP FOR GUSSET	11	FLOOR TO FRAME CONNECTORS	17
TURNING ANGLE	12	FLOOR TO FRAME BRACKET	17
CONNECTION ANGLE	12	MITER CONNECTOR	18
CONNECTING STRIP	12	MITE CONNECTOR	18
PROFILE CONNECTORS	13	TOOL HANGER	18
CABLE CLIP	13	CASTERS	19
CABLE TIE	13	PROFILE END CAPS	20
WIRE MESH PANEL HOLDER	14	PANEL MOUNTING	20
CLIP CABLE BINDER WITH HAMMER	14	BLOCK CABLE	20
PLUG IN PROFILE	14	ROLLER ELEMENT CLIP	21
COVER SLOT	15	ROLLER	21
COVER & REDUCTION	15	BACK LOCK	21
COVER PROFILE	15	GLASS PANEL CLAMP	22
PIVOT JOINT CONNECTORS	16	EXPANDED METAL PANEL	22
FLOOR MOUNT BASE	16	POCKET PULL	22
		POLYCARBONATE SHEET	22



LEVELING FEET

PAGE 23

FLOOR LEVEL FRAME	24	DUCK FOOT	24
THREADED ROD		BASE FOR HEAVY DUTY	25
FOR SWIVEL FOOT	24	THREADED BUSH	25
EXTENDED BASE	24		

HINGES & FITTINGS

PAGE 26

END PIECE FOR SYSTEM MACHINE	27	BALL CATCH	29
MACHINE HANDLE 240	27	MAGNETIC CATCH	30
MACHINE HANDLE	27	DOUBLE BALL CATCH	30
COMFORT HANDLE	28	DOUBLE BALL CATCH BRACKET	30
HANDLES	28	DOOR LATCH	31
FRONT HANDLE 121	28	LATCH	31
DOOR HINGES	29	DOUBLE BALL CATCH MS	31

T-SLOT NUTS

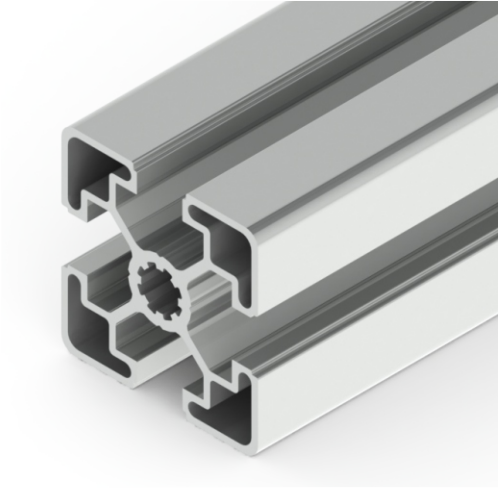
PAGE 32

ROLL IN T NUT WITH LEAF	33	SELF FORMING SCREW	33
ROLL IN T NUT WITH BALL	33	SQUARE NUT	33
T-BOLT & HEX NUT	33	ROLL IN T-SLOT NUT	33
T-NUT	33		

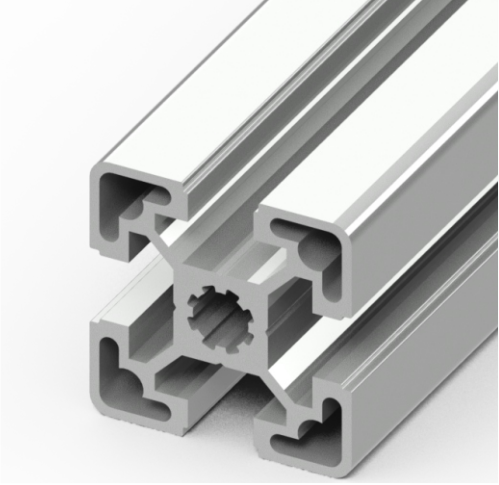
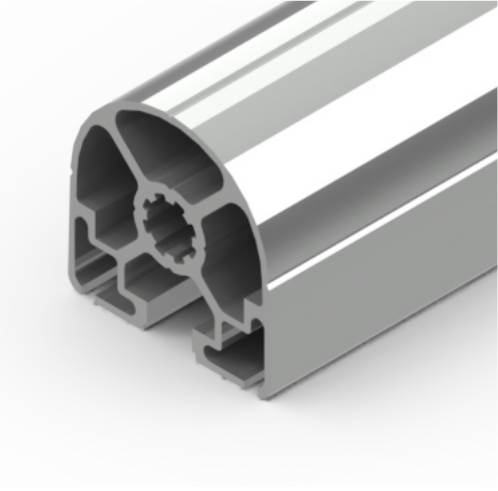
ALK PRODUCTS

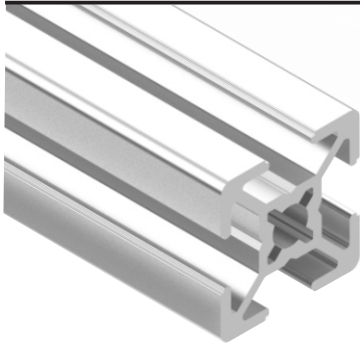
PAGE 35

DOCUMENT HOLDER	36	ROLLER CONVEYORS	38
CONNECTOR PLATE	36	ERGONOMIC ARMS	39
RAIL SYSTEM	37	ERGONOMIC WORK STATION	40

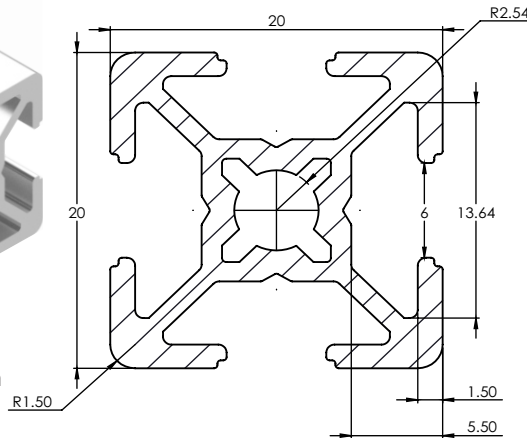


PROFILES



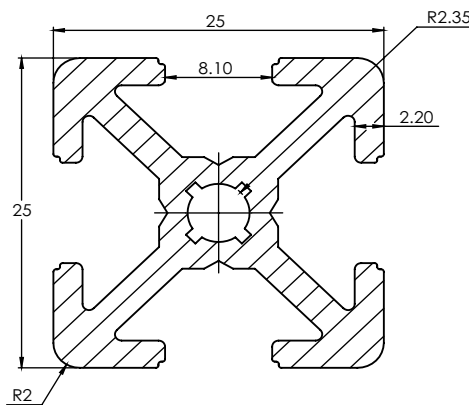
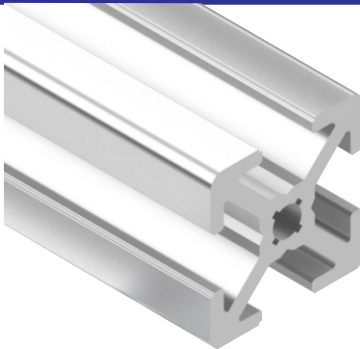


Now also available in 6.1m



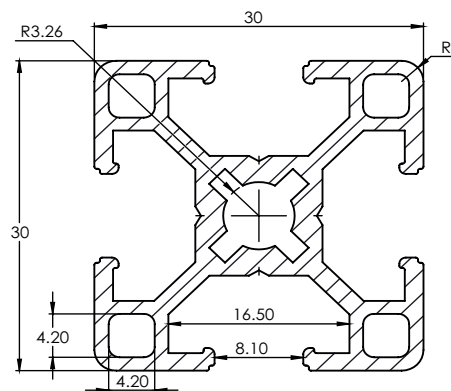
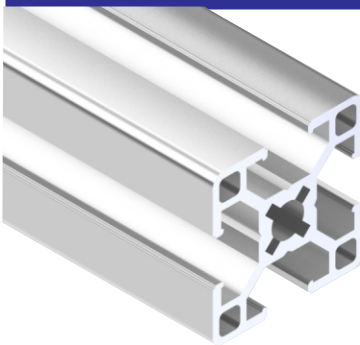
PROFILE 20x20

PART NUMBER	777-2020
MATERIAL	6105-T5 Aluminum
SURFACE FINISH	Clear anodized
WEIGHT	0.40 Kg/m
STOCK LENGTH	3.00 m
PERIMETER	18.15 cm
AREA	1.49 cm ²
CIRCLE	19.25 mm
MOMENT OF INERTIA	X: 33 kg/cm ² Y: 335.47 kg/cm ² Z: 335.47 kg/cm ²
MASS	1.2 kg



PROFILE 25x25

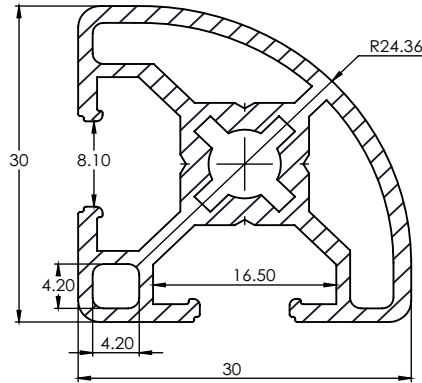
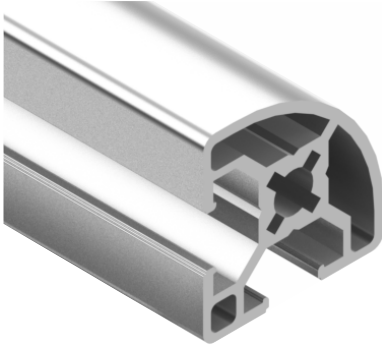
PART NUMBER	777-4545
MATERIAL	6105-T5 Aluminum
SURFACE FINISH	Clear anodized
WEIGHT	.5299 kg/m
STOCK LENGTH	6.10 m
PERIMETER	28.545 cm
AREA	1.97 cm ²
CIRCLE	33.69 mm
MOMENT OF INERTIA	X: 65482 kg/cm ² Y: 441.95 kg/cm ² Z: 441.95 kg/cm ²
MASS	3.2323 kg



PROFILE 30x30

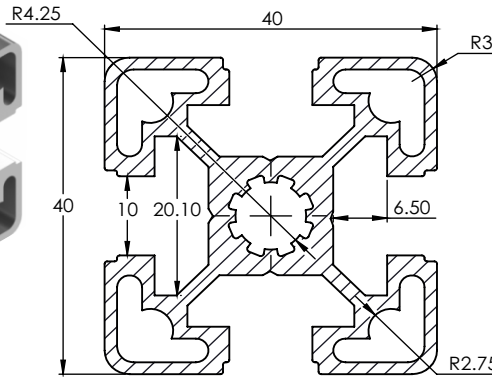
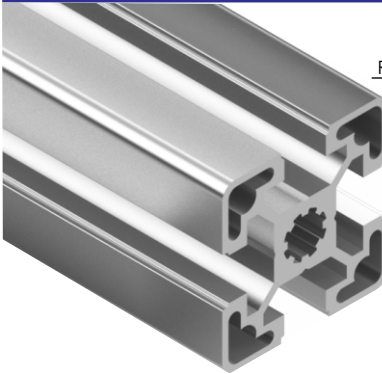
PART NUMBER	777-3030
MATERIAL	6105-T5 Aluminum
SURFACE FINISH	Clear anodized
WEIGHT	.763kgs/m
STOCK LENGTH	6.10 m
PERIMETER	34.254 cm
AREA	2.837 cm ²
CIRCLE	40.77 mm
MOMENT OF INERTIA	X: 1.358 kg/cm ² Y: 636.618 kg/cm ² Z: 636.618 kg/cm ²
MASS	4.65 kg





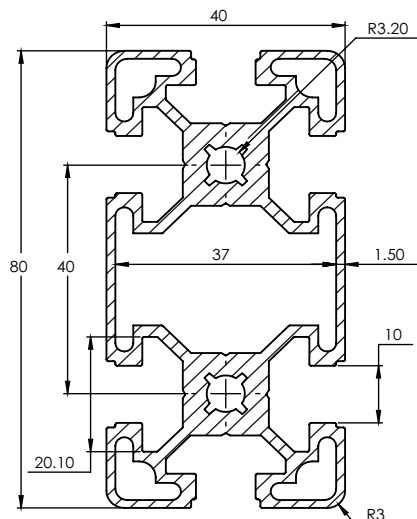
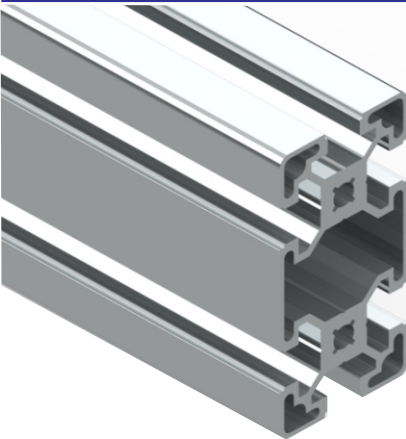
PROFILE 30x30R

PART NUMBER	777-30R
MATERIAL	6105-T5 Aluminum
SURFACE FINISH	Clear anodized
WEIGHT	0.725 kgs/m
STOCK LENGTH	6.10 m
PERIMETER	31.74 cm
AREA	2.694 cm ²
CIRCLE	40.77 mm
MOMENT OF INERTIA	X:1.139 kg/cm ² Y:604.27 kg/cm ² Z:604.48 kg/cm ²
MASS	4.42 kg



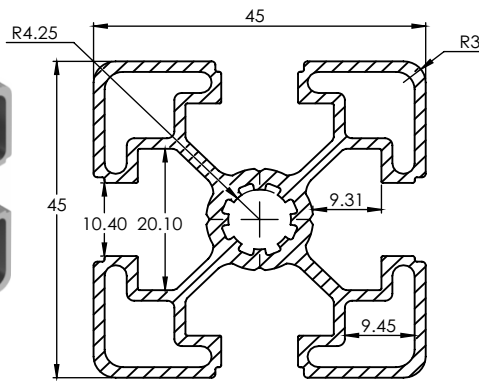
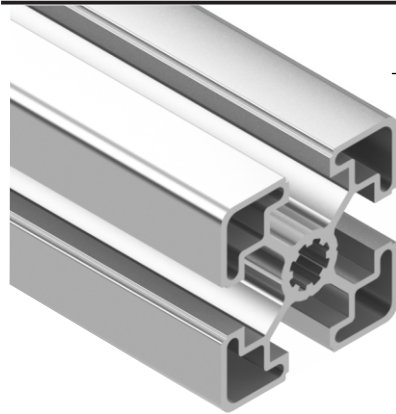
PROFILE 40x40

PART NUMBER	777-4040
MATERIAL	6105-T5 Aluminum
SURFACE FINISH	Clear anodized
WEIGHT	1.453 kgs/m
STOCK LENGTH	6.10 m
PERIMETER	51.746 cm
AREA	5.4 cm ²
CIRCLE	54.083 mm
MOMENT OF INERTIA	X:422.083 kg/cm ² Y:121312.42 kg/cm ² Z:121312.42 kg/cm ²
MASS	8.853 kg



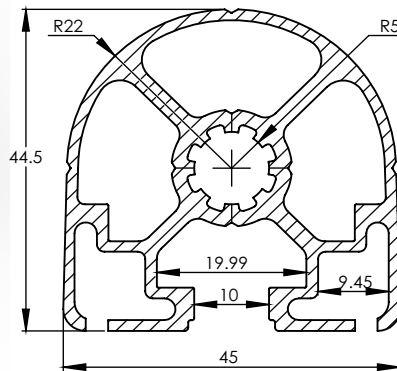
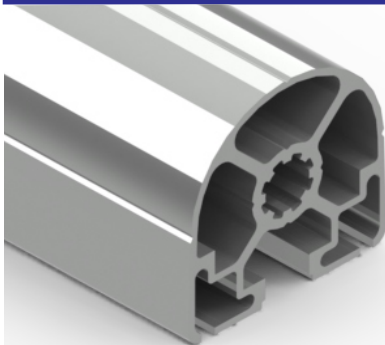
PROFILE 40x80

PART NUMBER	777-4080
MATERIAL	6105-T5 Aluminum
SURFACE FINISH	Clear anodized
WEIGHT	2.57 kg/m
STOCK LENGTH	6.10 m
PERIMETER	83.54 cm
AREA	9.57 cm ²
CIRCLE	100.37 mm
MOMENT OF INERTIA	X:1987.17 kg/cm ² Y:215004.4 kg/cm ² Z:216245.2 kg/cm ²
MASS	4.35 kg



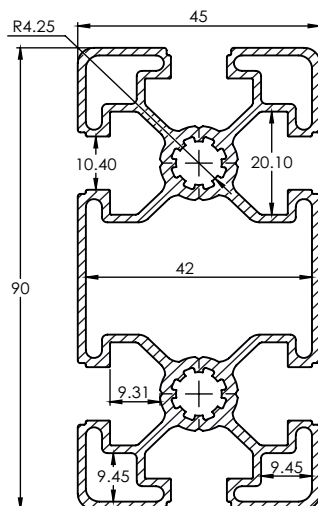
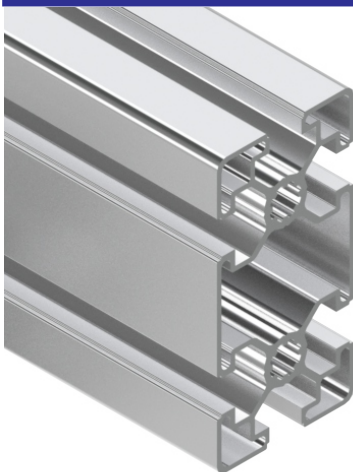
PROFILE 45x45

PART NUMBER	777-4545
MATERIAL	6105-T5 Aluminum
SURFACE FINISH	Clear anodized
WEIGHT	1.405 kgs/m
STOCK LENGTH	6.10 m
PERIMETER	60.895 cm
AREA	5.223 cm ²
CIRCLE	61.154 mm
MOMENT OF INERTIA	X:5.447 kg/cm ²
	Y:1173.63 kg/cm ²
	Z:1173.63 kg/cm ²
MASS	8.57 kg



PROFILE 45 FINISHED EDGES

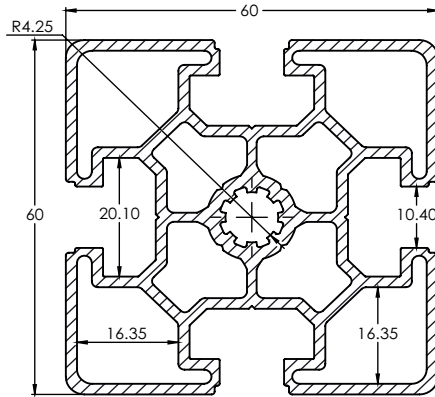
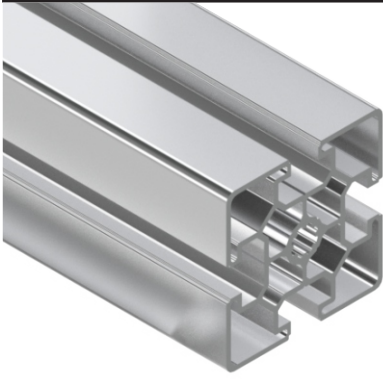
PART NUMBER	777-45180
MATERIAL	6105-T5 Aluminum
SURFACE FINISH	Clear anodized
WEIGHT	1.4 kgs/m
STOCK LENGTH	6.10 m
PERIMETER	53.21 cm
AREA	5.19 cm ²
MOMENT OF INERTIA	X:0.73 kg/cm ²
	Y:180.67 kg/cm ²
	Z:180.71 kg/cm ²
MASS	8.54 kg



PROFILE 45x90

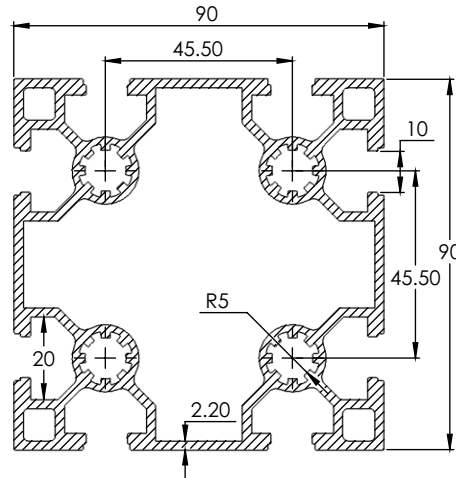
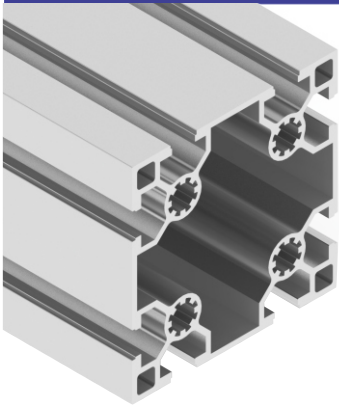
PART NUMBER	777-4590
MATERIAL	6105-T5 Aluminum
SURFACE FINISH	Clear anodized
WEIGHT	2.355 kgs/m
STOCK LENGTH	6.10 m
PERIMETER	99.761 cm
AREA	8.754 cm ²
CIRCLE	98.612 mm
MOMENT OF INERTIA	X:24.48 kg/cm ²
	Y:1967.334 kg/cm ²
	Z:1982.076 kg/cm ²
MASS	14.36 kg





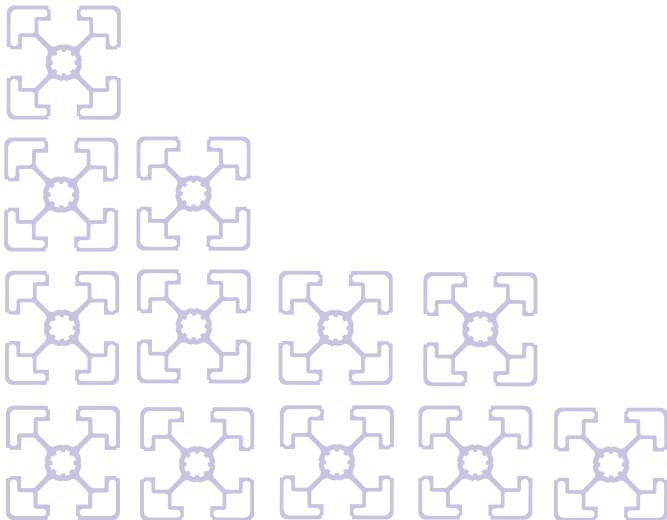
PROFILE 60x60

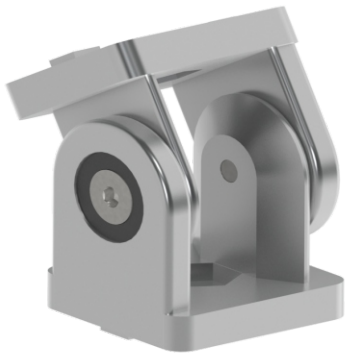
PART NUMBER	777-6060
MATERIAL	6105-T5 Aluminum
SURFACE FINISH	Clear anodized
WEIGHT	2.47 kgs/m
STOCK LENGTH	6.10 m
PERIMETER	97.244 cm
AREA	9.199 cm ²
CIRCLE	82.369 mm
MOMENT OF INERTIA	X:16.56 kg/cm ²
	Y:2070.47 kg/cm ²
	Z:2070.47 kg/cm ²
MASS	15.06 kg



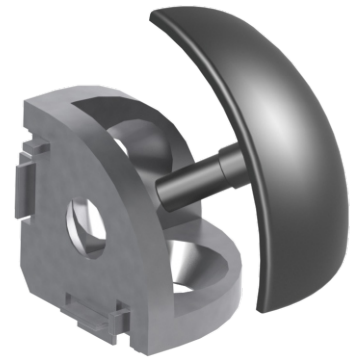
PROFILE 90x90

PART NUMBER	777-9090
MATERIAL	6105-T5 Aluminum
SURFACE FINISH	Clear anodized
WEIGHT	4.45 kgs/m
STOCK LENGTH	6.10 m
PERIMETER	148.211 cm
AREA	16.53 cm ²
CIRCLE	138.79 mm
MOMENT OF INERTIA	X:8775.31 kg/cm ²
	Y:374930.98 kg/cm ²
	Z:374930.98 kg/cm ²
MASS	23.73 kg





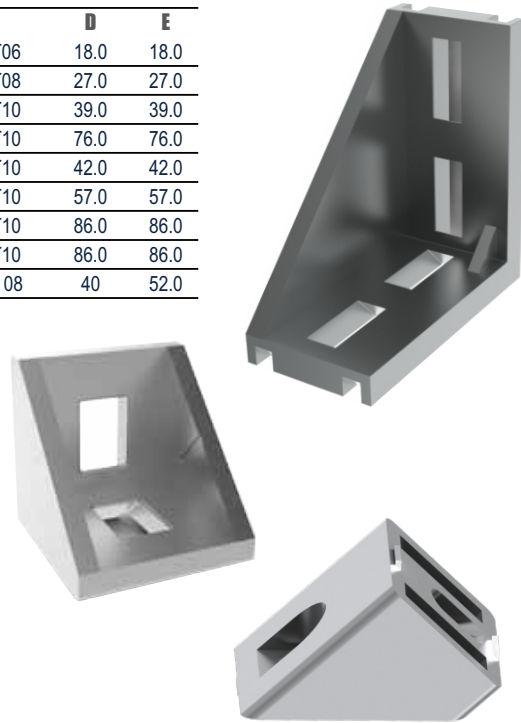
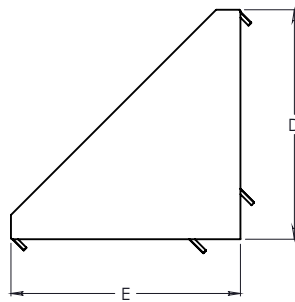
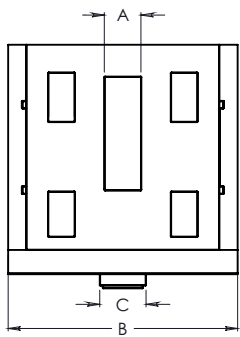
ACCESORIES



GUSSET:

MATERIAL: DIE CAST ALUMINUM

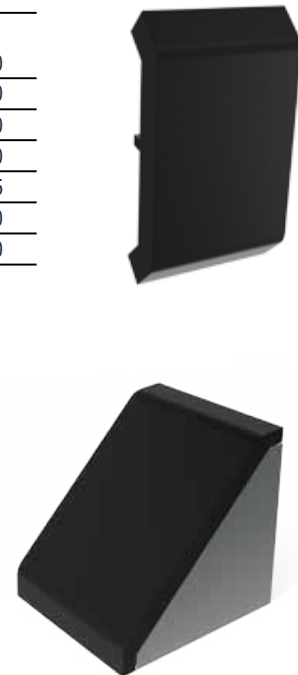
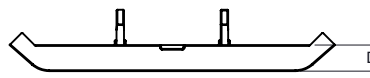
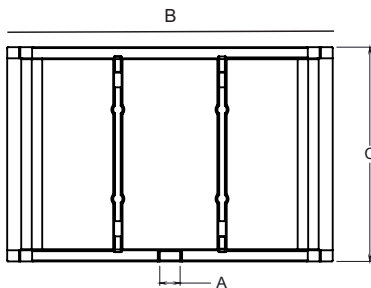
GUSSET	PART NUMBER	A	B	C	D	E
GUSSET 20X20 mm	ALG2020	4.5	18.0	SLOT06	18.0	18.0
GUSSET 30X30 mm	ALG3030	6.4	28.0	SLOT08	27.0	27.0
GUSSET 40X40 mm	ALG4040	9.0	40.0	SLOT10	39.0	39.0
GUSSET 40X80 mm	ALG4080	9.0	38.0	SLOT10	76.0	76.0
GUSSET 45X45 mm	ALG4545	10.0	42.0	SLOT10	42.0	42.0
GUSSET 60X60 mm	ALG6060	10.0	58.0	SLOT10	57.0	57.0
GUSSET 45X90 mm	ALG4590	10.0	43.0	SLOT10	86.0	86.0
GUSSET 90X90 mm	ALG9090	10.0	88.0	SLOT10	86.0	86.0
GUSSET 40,45°	ALG4045	9.0	40.0	SLOT 08	40	52.0



END CAP FOR GUSSET:

MATERIAL: PLASTIC

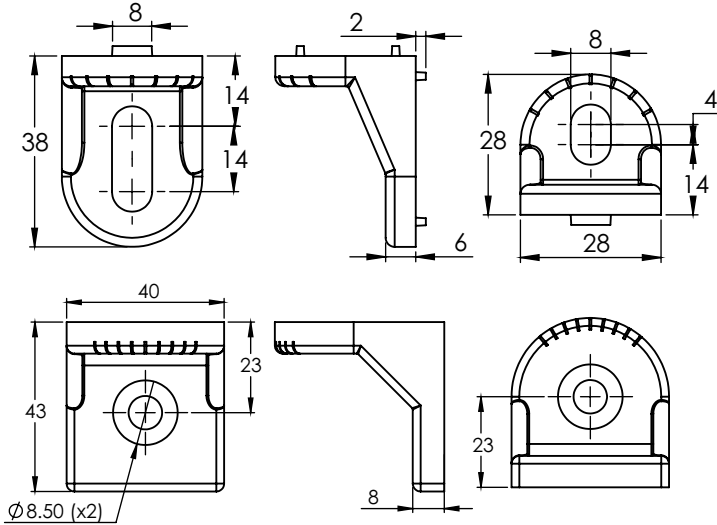
GUSSET	PART NUMBER	A	B	C	D
END CAP FOR GUSSET 20X20 mm	ALECG2020	5.0	28.2	17.6	5.0
END CAP FOR GUSSET 30X30 mm	ALECG3030	6.0	44.5	27.5	4.0
END CAP FOR GUSSET 40X40 mm	ALECG4040	6.0	64.0	39.5	4.0
END CAP FOR GUSSET 40X80 mm	ALECG4080	6.0	106.0	38.0	4.0
END CAP FOR GUSSET 45X45 mm	ALECG4545	6.0	70.0	40.0	8.5
END CAP FOR GUSSET 60X60 mm	ALECG6060	6.0	87.5	57.6	7.0
END CAP FOR GUSSET 90X90 mm	ALECG9090	6.0	133.0	87.6	7.0



TURNING ANGLE

MATERIAL: DIE CAST ALUMINUM

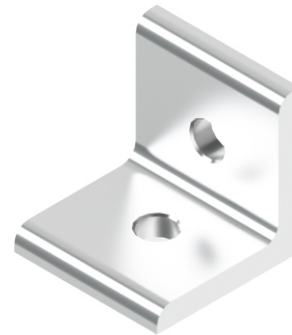
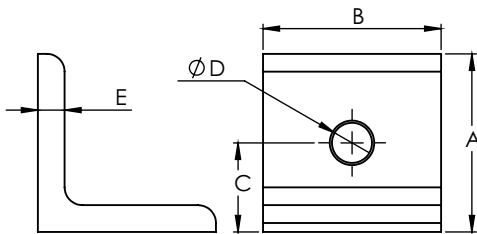
TURNING ANGLE	PART NUMBER
TURNING ANGLE 30	ALTA30
TURNING ANGLE 45	ALTA45



CONNECTION ANGLE

MATERIAL: ANODIZED ALUMINUM

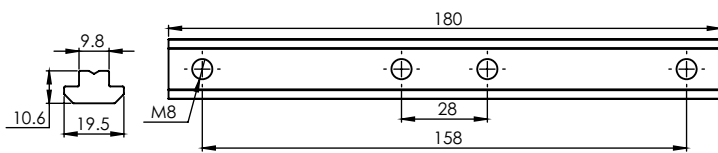
CONNECTION ANGLE	A	B	C	D	E	PART NUMBER
CONNECTION ANGLE 20mm	20.0	18.0	10.0	5.5	3.0	ALCA20
CONNECTION ANGLE 30mm	30.0	30.0	15.0	7.0	5.0	ALCA30
CONNECTION ANGLE 45mm	45.0	41.0	22.0	9.0	6.0	ALCA45



CONNECTING STRIP

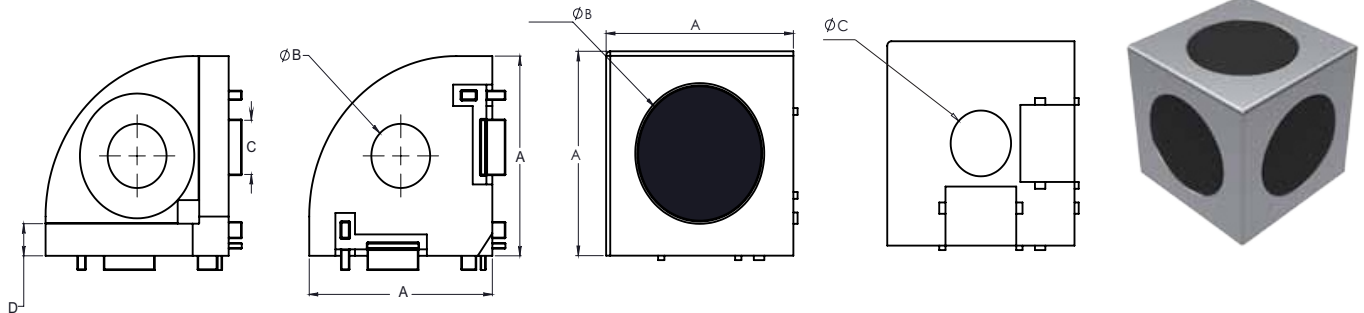
MATERIAL: ZINC PLATED STEEL

CONNECTING STRIP	SLOT	PART NUMBER
CONNECTING STRIP	10	ALCA20



PROFILE CONNECTORS:

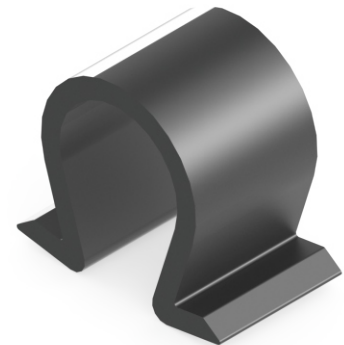
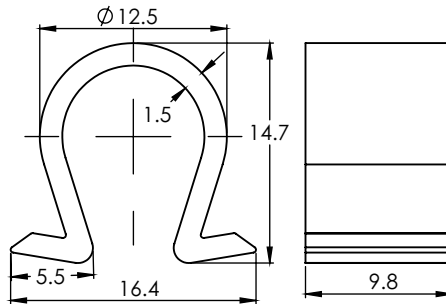
PROFILE CONNECTORS	A	B	C	D	PART NUMBER
3 WAY CONNECTOR CAST FOR 30X30	28.0	9.0	8.0	5.0	AL3WC
SQUARE COVER CAP 30 FOR 3 WAY CONNECTOR					AL3WCSC
ROUND COVER CAP 30 FOR 3 WAY CONNECTOR					AL3WRC
CUBIC CONNECTOR CAST FOR 20X20	20.0	24.0	6.2		AL20CC
CUBIC CONNECTOR CAST FOR 30X30	30.0	24.0	9.0		AL30CC
CUBIC CONNECTOR CAST FOR 40X40	40.0	24.0	8.5		AL40CC
CUBIC CONNECTOR CAST FOR 45X45	45.0	24.0	13.0		AL45CC



CABLE CLIP

MATERIAL: PLASTIC PP+PE

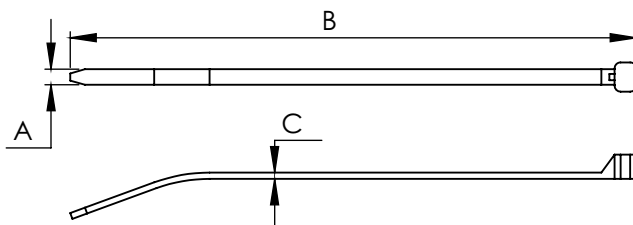
CABLE CLIP	SLOT	PART NUMBER
CABLE CLIP	8-11	ALCC



CABLE TIE

MATERIAL: NYLON PA

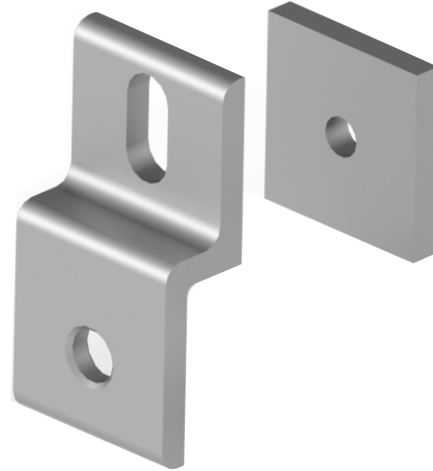
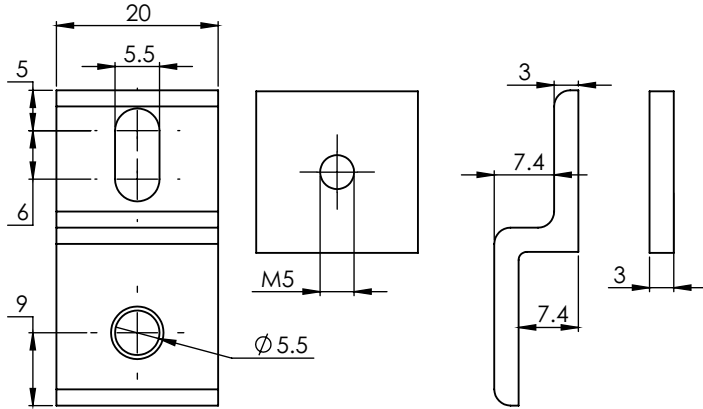
CABLE TIE	A	B	C	PART NUMBER
CABLE TIE SMALL	2.2	75.0	1.0	ALCTS
CABLE TIE LARGE	2.6	135.0	1.1	ALCTL



WIRE MESH PANEL HOLDER

MATERIAL: ANODIZED ALUMINUM

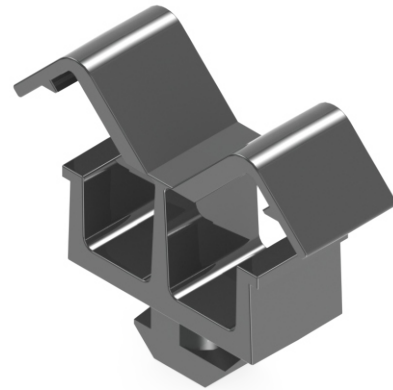
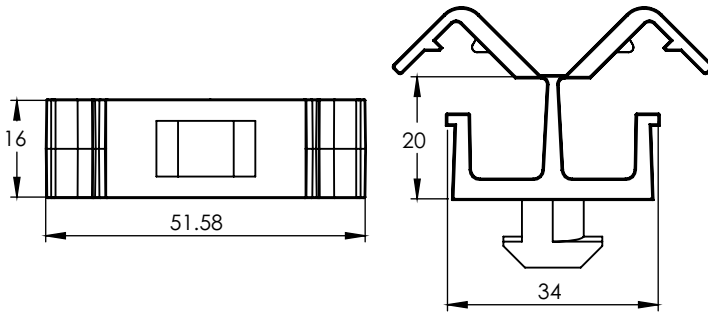
WIRE MESH PANEL HOLDER	PART NUMBER
WIRE MESH PANELHOLDER	ALWM



CLIP CABLE BINDER WITH HAMMER

MATERIAL: NYLON PA

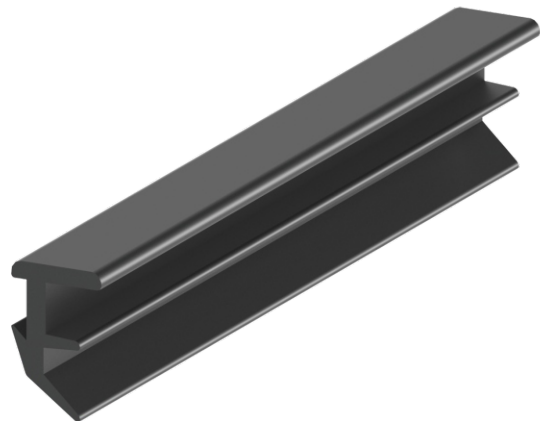
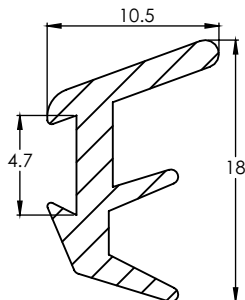
CLIP CABLE BINDING WITH HAMMER	SLOT	PART NUMBER
CLIP CABLE BINDING	8	ALCCB08
CLIP CABLE BINDING	10	ALCCB10



PLUG IN PROFILE

MATERIAL: PLASTIC TPE

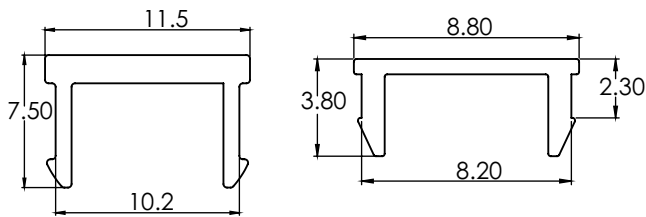
PLUG IN PROFILE	SLOT	PART NUMBER
PLUG IN PROFILE	8-10	ALPIP



COVER SLOT

MATERIAL: PLASTIC PP

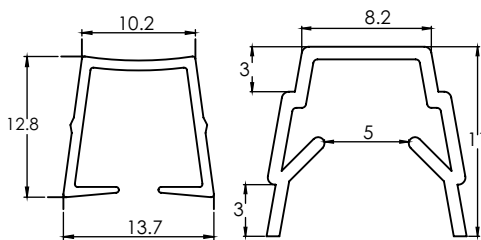
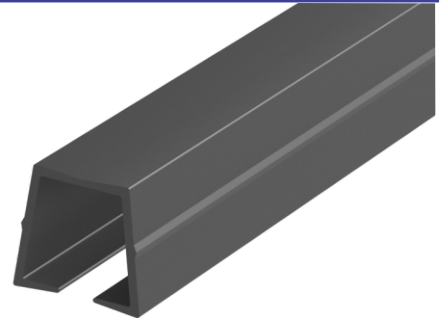
COVER SLOT	LENGTH	COLOR	PART NUMBER
COVER SLOT 08	2m	BLACK	ALCS08
COVER SLOT 08	2m	YELLOW	ALCSY08
COVER SLOT 08	2m	GREY	ALCSG08
COVER SLOT 08	2m	BLUE	ALCSB08
COVER SLOT 08	2m	ALUMINIUM	ALCSA08
COVER SLOT 10	2m	BLACK	ALCS10
COVER SLOT 10	2m	YELLOW	ALCSY10
COVER SLOT 10	2m	GREY	ALCSG10
COVER SLOT 10	2m	RED	ALCSR10
COVER SLOT 10	2m	ALUMINIUM	ALCSA10



COVER AND REDUCTION

MATERIAL: PLASTIC PP

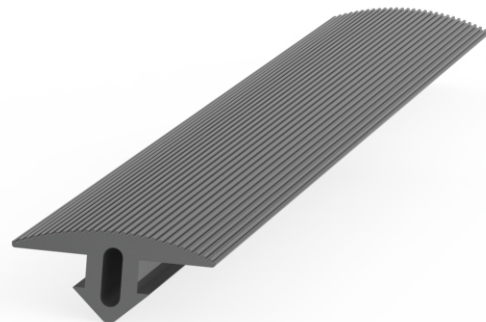
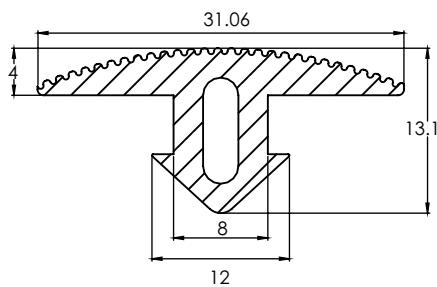
COVER AND REDUCTION	LENGTH	PART NUMBER
COVER AND REDUCTION SLOT 08	2mt	ALC&R08
COVER AND REDUCTION SLOT 10	2mt	ALC&R10



COVER PROFILE

MATERIAL: PLASTIC NBR

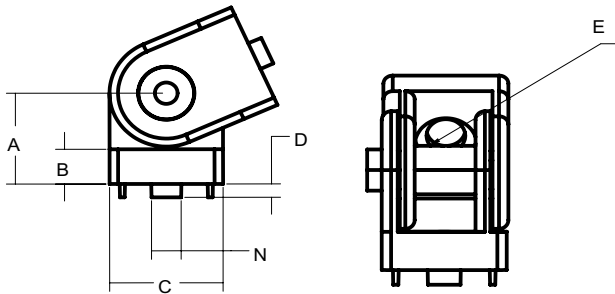
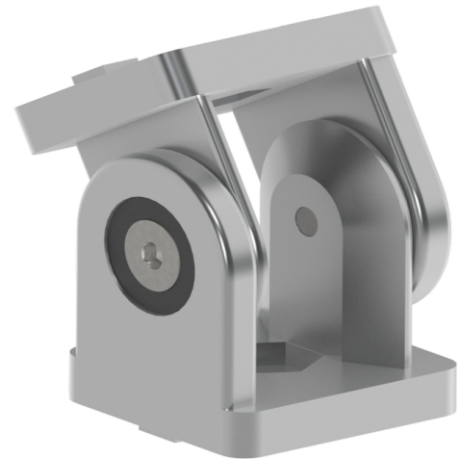
COVER PROFILE	LENGTH	SLOT	PART NUMBER
COVERPROFILE	20m	8	ALCP08



PIVOT JOIN CONNECTORS

MATERIAL: DIE CAST ALUMINUM

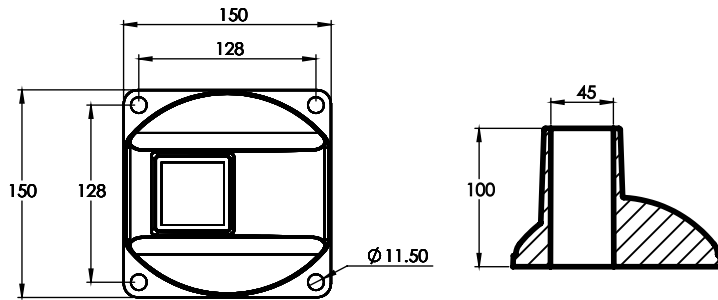
PIVOT JOIN CONNECTOR	PART NUMBER	SLOT	A	B	C	D	E
PIVOT JOIN CONNECTOR	ALPJC30	8	22.5	7.0	30.0	2.5	8.3
PIVOT JOIN CONNECTOR	ALPJC40	10	30.0	8.0	40.0	1.8	14.0
PIVOT JOIN CONNECTOR	ALPJC45	10	30.0	8.0	45.0	1.8	14.0
PIVOT JOIN CONNECTOR W/HANDLED	ALPJCH30	8	22.5	7.0	30.0	2.5	8.3
PIVOT JOIN CONNECTOR W/HANDLED	ALPJCH40	10	30.0	8.0	40.0	1.8	14.0
PIVOT JOIN CONNECTOR W/HANDLED	ALPJCH45	10	30.0	8.0	45.0	1.8	14.0



FLOOR MOUNT BASE FOR 45 PROFILE

MATERIAL: DIE CAST ALUMINUM

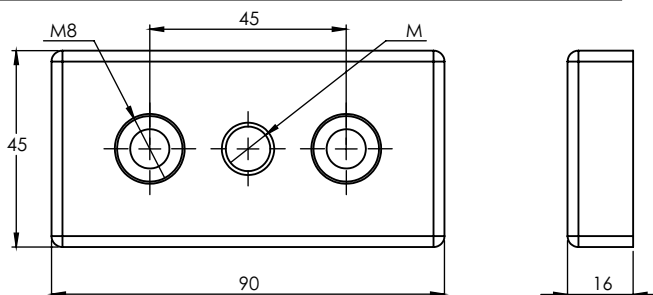
FLOOR MOUNT BASE	PART NUMBER
FLOOR MOUNT BASE	ALFLB45X45



TRANSPORT AND BASE PLATE

MATERIAL: DIE CAST ZINC

TRANSPORT AND BASE PLATE	M	PART NUMBER
TRANSPORT AND BASE PLATE 45X90	M16	ALTBP459016
TRANSPORT AND BASE PLATE 45X90	M20	ALTBP459020

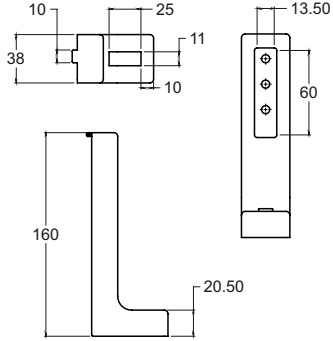


FLOOR TO FRAME BLACK

MATERIAL: DIE CAST ZINC

FLOOR TO FRAME BLACK	PART NUMBER
----------------------	-------------

FLOOR LEVEL FRAME BLACK	ALFLFB
-------------------------	--------

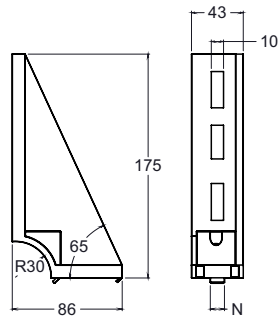


FLOOR TO FRAME CAST

MATERIAL: DIE CAST ALUMINUM

FLOOR TO FRAME CAST	PART NUMBER
---------------------	-------------

FLOOR LEVEL FRAME CAST	ALFLFC
------------------------	--------

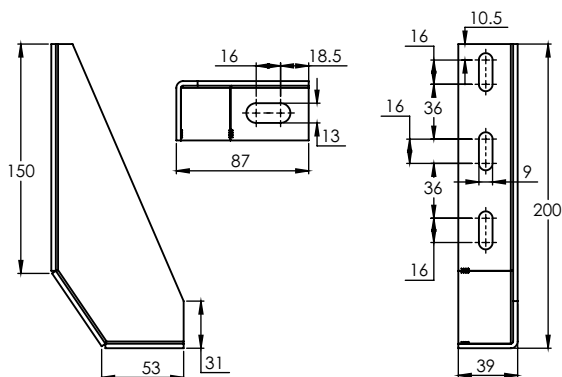


FLOOR TO FRAME CAST BRACKET

MATERIAL: STEEL

FLOOR TO FRAME CAST BRACKET	PART NUMBER
-----------------------------	-------------

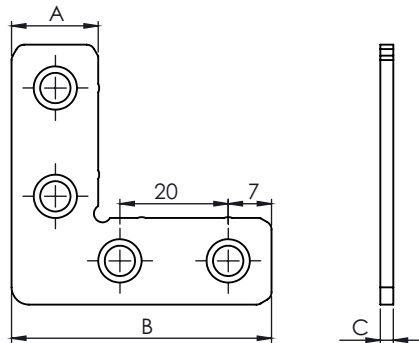
FLOOR TO FRAME CAST BRACKET	ALFTFB
-----------------------------	--------



MITER CONNECTOR 90°

MATERIAL: STEEL

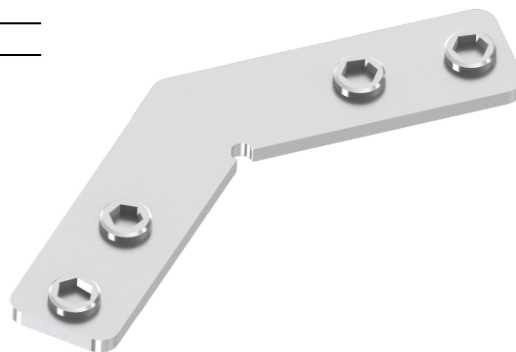
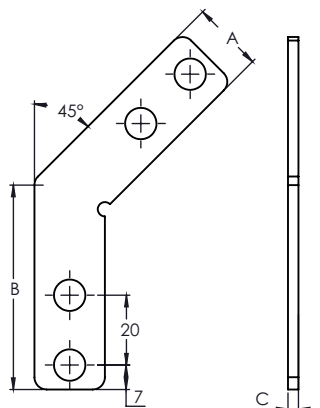
MITER CONNECTOR 90°	SLOT	A	B	C	PART NUMBER
MITER CONNECTOR 90°	08	16.0	46.0	3.0	ALMC9008
MITER CONNECTOR 90°	10	20.2	60.0	3.0	ALMC9010



MITE CONNECTOR

MATERIAL: STEEL

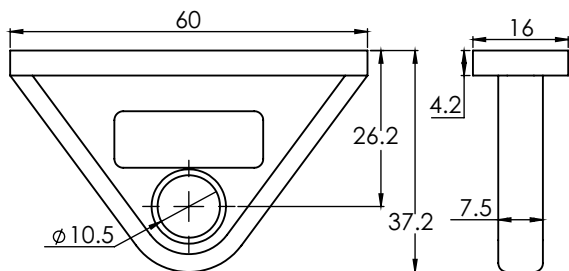
MITE CONNECTOR	SLOT	A	B	C	PART NUMBER
MITE CONNECTOR	08	16.0	60.0	3.0	ALMC08
MITE CONNECTOR	10	20.2	50.0	3.0	ALMC10



TOOL HANGER

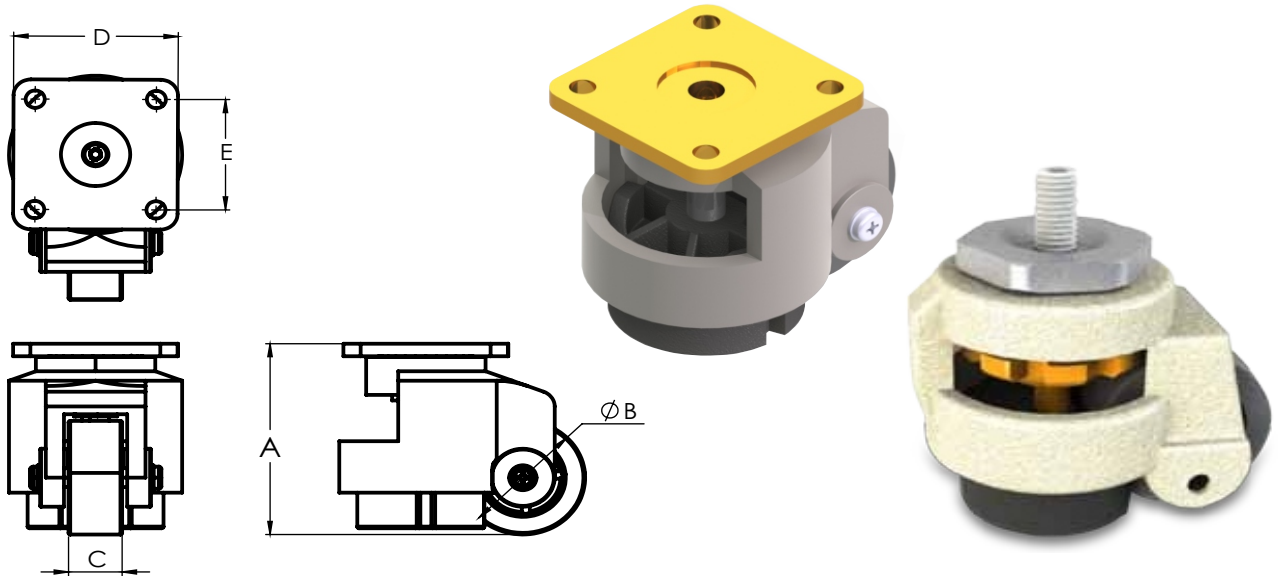
MATERIAL: NYLON PA

TOOL HANGER	PART NUMBER
TOOL HANGER	ALTH



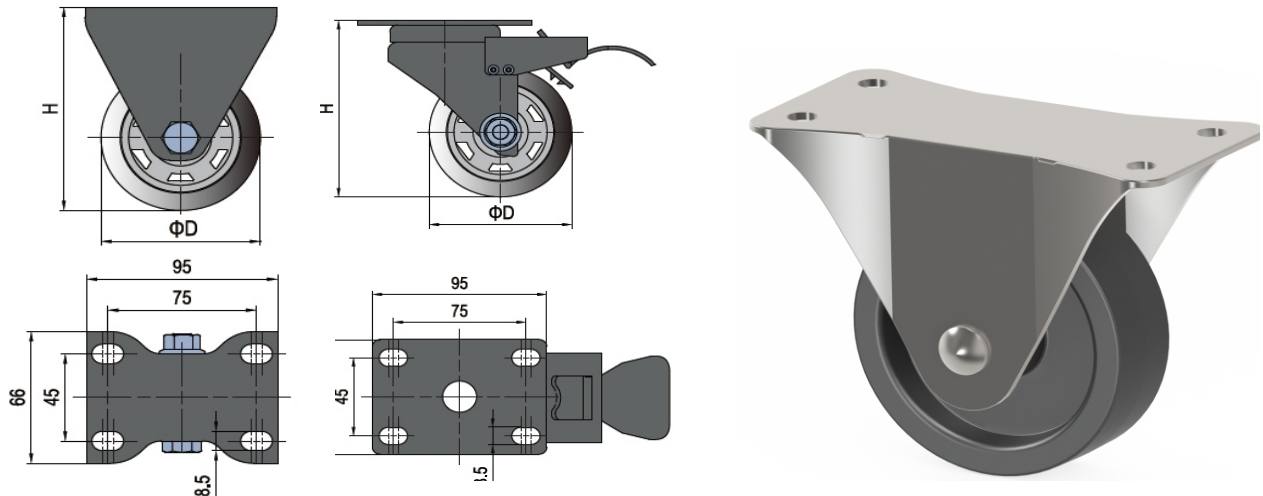
CASTERS

LEVELING CASTER SQUARE PLATE	PART NUMBER	M	A	B	C	D	E	LOAD lb
LEVELING CASTER HEX PLATE 2"	ALLCHP2	M12	82	50.8	24.2			550.0
LEVELING CASTER HEX PLATE 2.5"	ALLCHP25	M12	101.9	63.5	28.9			1322.0
LEVELING CASTER HEX PLATE 3"	ALLCHP3	M16	119.8	76.2	30.1			2200.0
LEVELING CASTER SQUARE PLATE 2"	ALLCSP2	M6	82.0	50.8	24.2	73.0	57.94	550.0
LEVELING CASTER SQUARE PLATE 2.5"	ALLCSP25	M8	101.9	63.5	28.9	64.2	69.85	1322.0
LEVELING CASTER SQUARE PLATE 3"	ALLCSP3	M10	119.8	76.2	30.1	95.25	69.85	2200.0



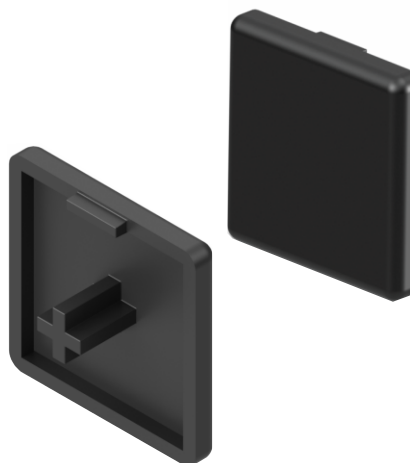
CASTERS

CASTER	PART NUMBER	D(mm)	H(mm)	LOAD/kgs
FIXED CASTER PLATE	ALFCP75	75.0	107.0	100.0
FIXED CASTER PLATE	ALFCP100	100.0	130.0	135.0
BRAKE CASTER PLATE	ALBCP75	75.0	107	100.0
BRAKE CASTER PLATE	ALBCP100	100.	130	135.0

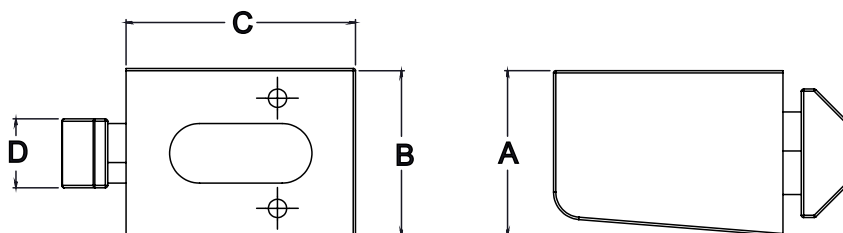


PROFILE END CAPS:**MATERIAL: NYLON PA**

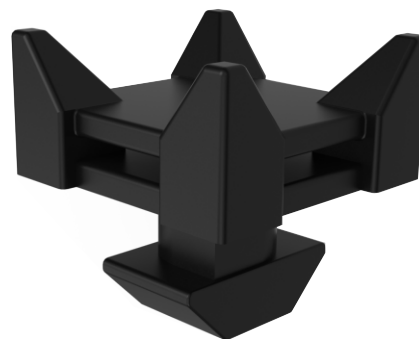
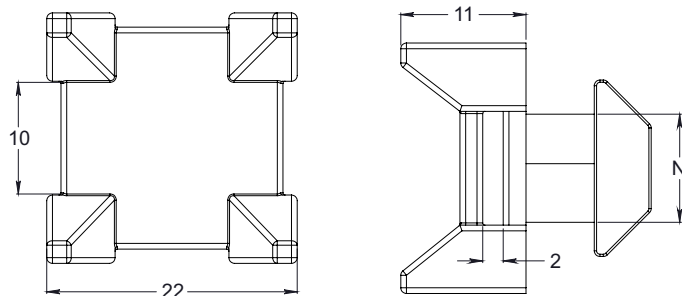
PROFILE END CAPS	PART NUMBER
PROFILE END CAP 20X20 mm	ALEC20
PROFILE END CAP 25X25 mm	ALEC25
PROFILE END CAP 30X30 mm	ALEC30
PROFILE END CAP 30X30R mm	ALEC30R
PROFILE END CAP 40X40 mm	ALEC40
PROFILE END CAP 40X80 mm	ALEC4080
PROFILE END CAP 45X45 mm	ALEC45
PROFILE END CAP 45X90 mm	ALEC4590
PROFILE END CAP 60X60 mm	ALEC60
PROFILE END CAP 90X90 mm	ALEC90

**PANEL MOUNTING BLOCK****MATERIAL: NYLON PP**

PANEL MOUNTING	PART NUMBER	A	B	C
PANEL MOUNTING 08 SLOT	ALPM08	18.5	18.5	SLOT 08
PANEL MOUNTING 10 SLOT	ALPM10	29.5	43.5	SLOT 10

**BLOCK CABLE****MATERIAL: NYLON PP**

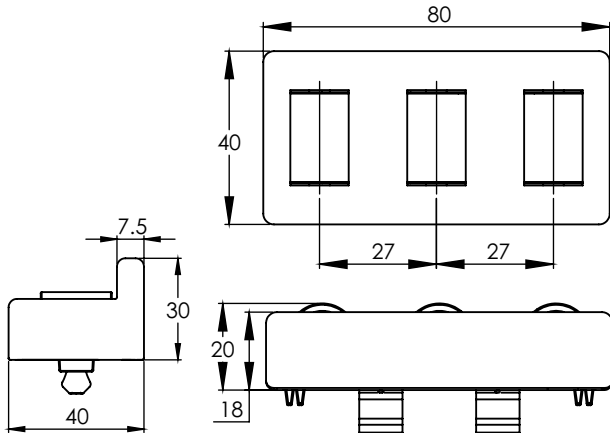
CROSS CABLE	PART NUMBER	N
CROSS CABLE	ALCC08	SLOT 08
CROSS CABLE	ALCC10	SLOT 10
UNIVERSAL CROSS CABLE	ALCCUNI	



ROLLER ELEMENT CLIP

MATERIAL: NYLON PA

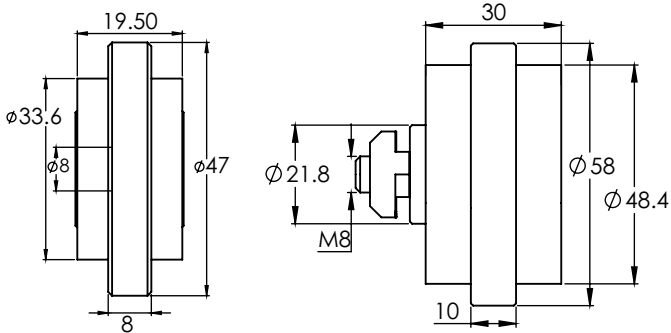
COVER AND REDUCTION	SLOT	PART NUMBER
ROLLER ELEMENT CLIP WITHOUT LATERAL GUIDE	8/10	ALRCWOG
ROLLER ELEMENT CLIP WITH LATERAL GUIDE	8/10	ALRCWG



ROLLER

MATERIAL: NYLON PA

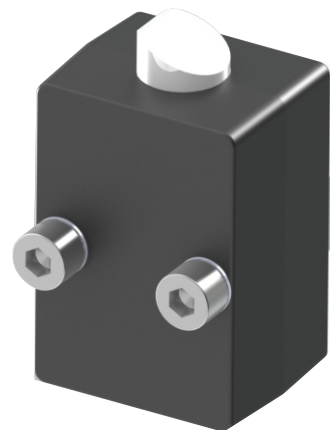
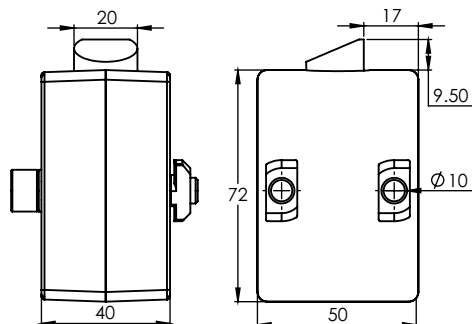
ROLLER	SLOT	PART NUMBER
ROLLER 58	10	ALR5810



BACK LOCK

MATERIAL: DIE CAST ZINC

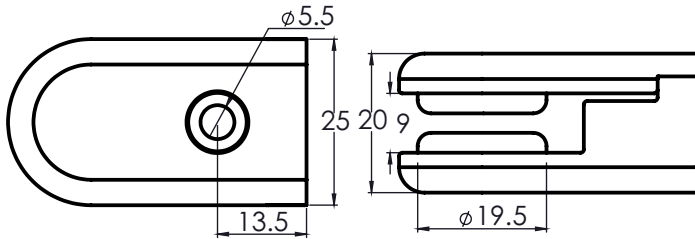
BACK LOCK	SLOT	PART NUMBER
BACK LOCK	10	ALBL



GLASS PANEL CLAMP

MATERIAL: DIE CAST ZINC

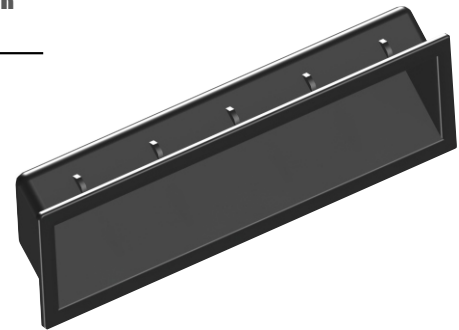
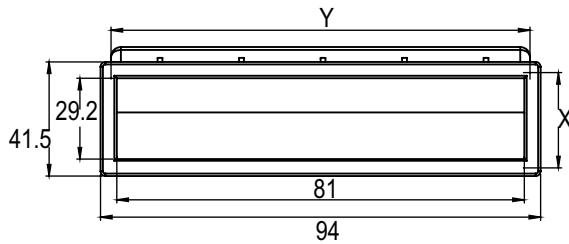
GLASS PANEL CLAMP	PART NUMBER
GLASS PANEL CLAMP	ALGPC



POCKET PULL

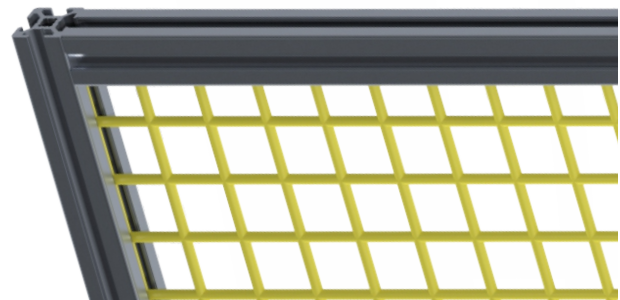
MATERIAL: PA6 GF30

POCKET PULL	PANEL CUTOUT Y mm	PANEL CUT OUT X mm	PART NUMBER
POCKET PULL	85.0	35.0.	ALPPS



EXPANDED METAL PANEL

EXPANDED METAL	PART NUMBER	W(FT)	H(FT)
METAL PANEL BLACK	ALMB1010	4	8
METAL PANEL YELLOW	ALMY1010	4	8
METAL PANEL BLACK	ALMB1010S	2	4
METAL PANEL YELLOW	ALMY1010S	2	4



POLYCARBONATE SHEET

POLYCARBONATE	DIMENSION	PART NUMBER
POLYCARBONATE SHEET	1/4"x48"x96"	ALPS





LEVELING FEET



FLOOR LEVEL FRAME

MATERIAL: NYLON PA/DIE CAST ZINC

BASE FOR SWIVEL FOOT	PART NUMBER
BASE FOR SWIVEL FOOT 45 mm PLASTIC	BFSF45P
BASE FOR SWIVEL FOOT 60 mm PLASTIC	BFSF60P
BASE FOR SWIVEL FOOT 45 mm STEEL	BFSF45S
BASE FOR SWIVEL FOOT 60 mm STEEL	BFSF60S



Sold separately. The threaded rod fits any base

THREADED ROD FOR SWIVEL FOOT

MATERIAL: ZINC PLATED STEEL

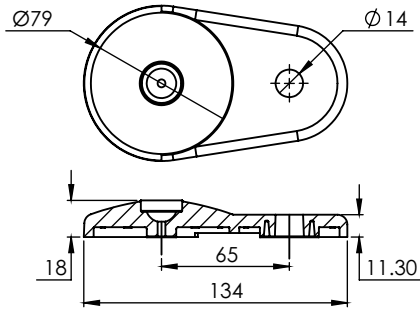
THREADED ROD FOR SWIVEL FOOT	PART NUMBER
THREADED ROD FOR SWIVEL FOOT M -10X45 mm	TRFS 1045
THREADED ROD FOR SWIVEL FOOT M -10X70 mm	TRFS 1070
THREADED ROD FOR SWIVEL FOOT M-12X45 mm	TRFSF1245
THREADED ROD FOR SWIVEL FOOT M -16X100 mm	TRFSF16100
THREADED ROD FOR SWIVEL FOOT M-16X125 mm	TRFSF16125
THREADED ROD FOR SWIVEL FOOT M -20X125 mm	TRFSF20125



EXTENDED BASE

MATERIAL: DIE CAST ZINC

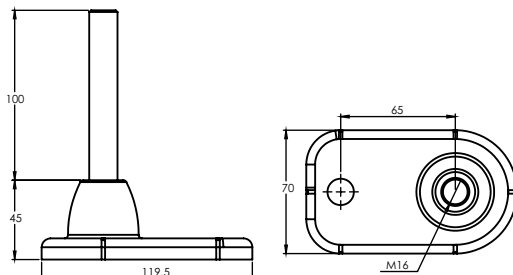
EXTENDED BASE	PART NUMBER
EXTENDED BASE	EBFSF80



DUCK FOOT

MATERIAL: DIE CAST ALUMINUM

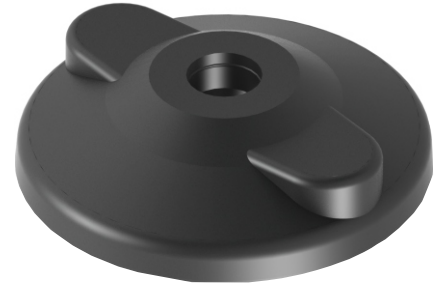
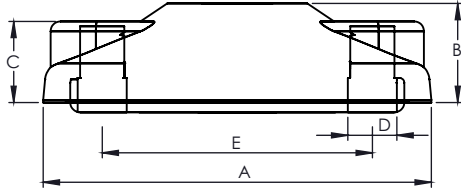
DUCK FOOT M16X100	PART NUMBER
DUCK FOOT	ALDFSS16100



BASE FOR HEAVY DUTY BALL JOINT 22

MATERIAL: NYLON PA

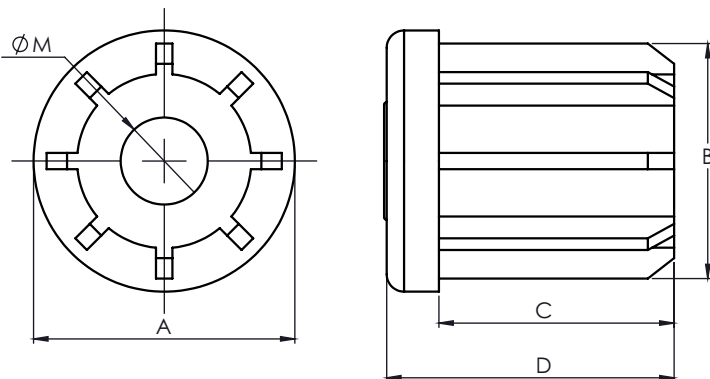
BASE HEAVY DUTY	PART NUMBER	A	B	C	D	M
BASE DIAM 125	ALBHD125	125.0	44.0	24.0	13.4	96.0
BASE DIAM 175	ALBHD175	175.0	46.0	22.0	17.0	135.0

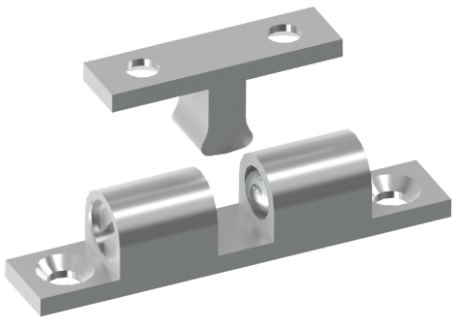


THREADED BUSH FOR ROUND TUBES

MATERIAL: NYLON PA

ROUND TUBE	M	A	B	C	D	PART NUMBER
30.0X1.0	12.0	30.0	28.5	27.0	33.0	ALTBRT3001
30.0X1.5	12.0	30.0	27.5	27.0	33.0	ALTBRT3015
30.0x2.0	12.0	30.0	26.5	27.0	33.0	ALTBRT3020
30.0x2.5	12.0	30.0	25.5	27.0	33.0	ALTBRT3025
42.4x1.5	16.0	42.4	39.9	35.0	43.0	ALTBRT4215
42.4x2.0	16.0	42.4	38.9	35.0	43.0	ALTBRT4220
42.4x2.5	16.0	42.4	37.9	35.0	43.0	ALTBRT4225
60.3x2.0	16.0	60.3	56.8	44.0	55.0	ALTBRT6020
60.3x2.5	16.0	60.3	55.8	44.0	55.0	ALTBRT6025
60.3x3.0	16.0	60.3	54.8	44.0	55.0	ALTBRT6030
60.3x4.0	16.0	60.3	52.8	44.0	55.0	ALTBRT6040





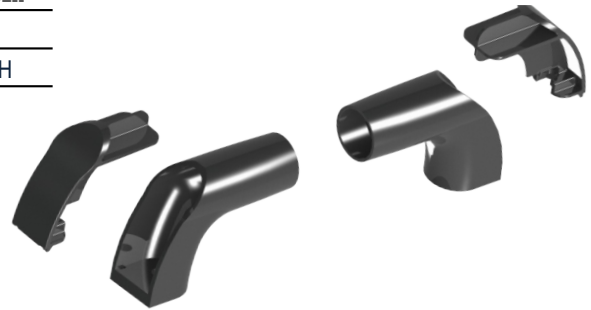
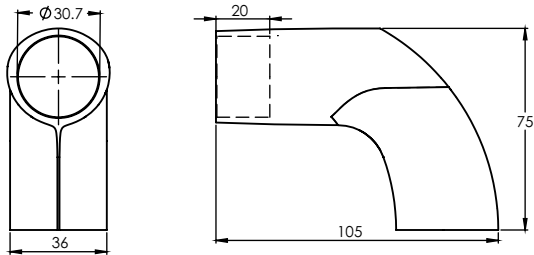
HINGES & FITTINGS



END PIECE FOR SYSTEM HANDLE

MATERIAL: NYLON PA

END PIECE FOR SYSTEM HANDLE	PART NUMBER
END PIECE FOR SYSTEM HANDLE	ALEPSH
COVER CAPS FOR END PIECE FOR SYSTEM HANDLE	ALCCEPSH

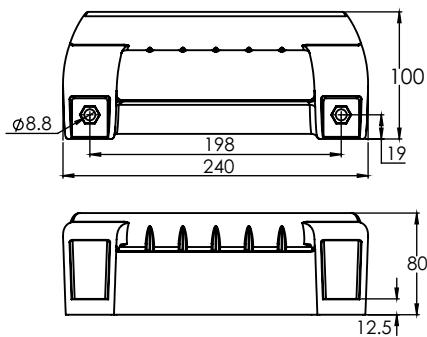


Cover caps for system handle are sold separately

MACHINE HANDLE 240

MATERIAL: NYLON PA

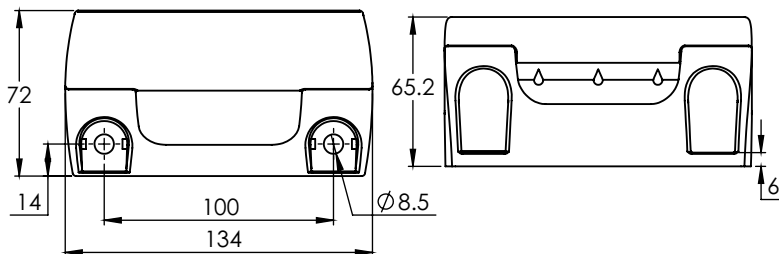
MACHINE HANDLE	PART NUMBER
MACHINE HANDLE	ALMH240



MACHINE HANDLE

MATERIAL: NYLON PA

MACHINE HANDLE	PART NUMBER
MACHINE HANDLE	ALMH
COVER CAPS FOR MACHIE HANDLE	ALCCMH

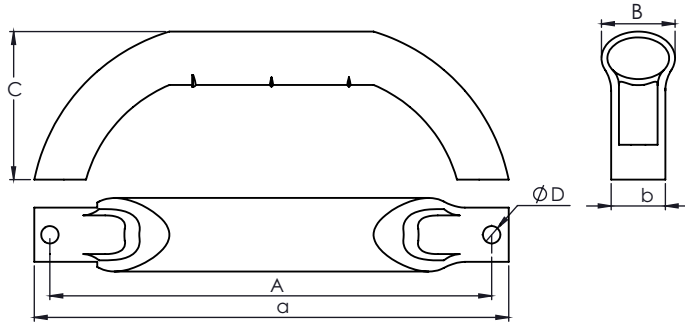


Cover caps for machine handle are sold separately

COMFORT HANDLE

MATERIAL: NYLON PA

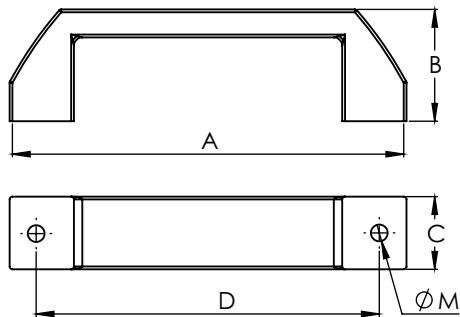
COMFORT HANDLE	PART NUMBER	A	a	B	b	C	D
COMFORT HANDLE 120	ALCH120	120.0	142.0	20.0	17.0	48.0	6.2
COMFORT HANDLE 160	ALCH160	160.0	188.0	30.0	27.0	60.0	8.2



HANDLES

MATERIAL: NYLON PA

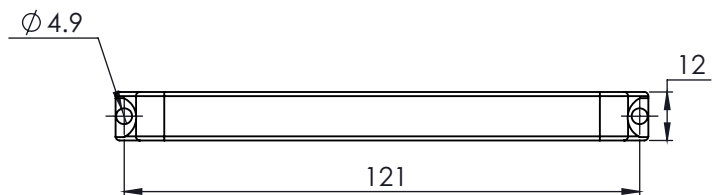
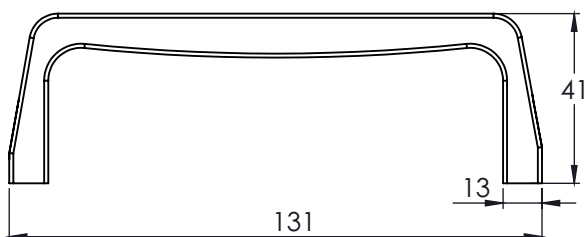
STANDARD HANDLE	PART NUMBER	A	B	C	D	M
MEDIUM HANDLE DE LUXE	ALHME	142.0	40.0	26.0	122.0	M6
BRIDGE HANDLE	ALPM10	170.0	52.0	28.0	152.0	M6



FRONT HANDLE 121

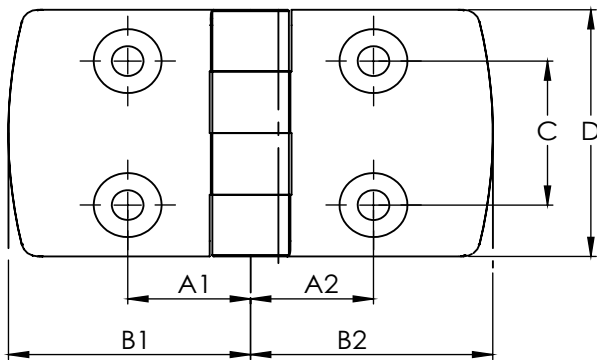
MATERIAL: NYLON PA

FRONT HANDLE	PART NUMBER
FRONT HANDLE	ALFH121



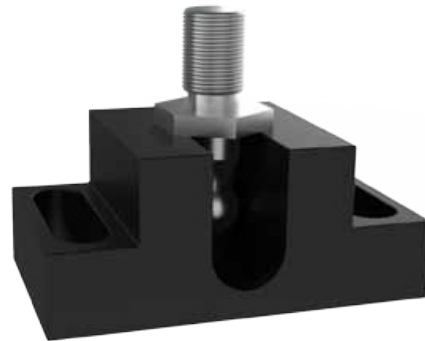
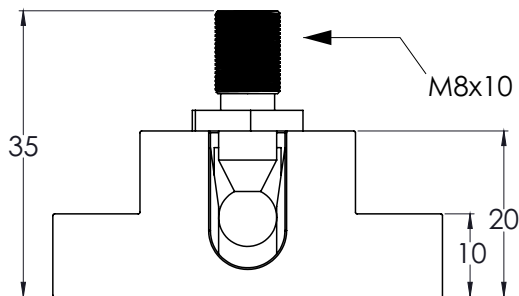
DOOR HINGES

DOOR HINGES	MATERIAL	PART NUMBER	A1	A2	B1	B2	C	D
STANDARD HINGE 20X20	PLASTIC	ALSH2020P	17.5	17.5	29.5	29.5	28.0	48.0
STANDARD HINGE 25X25	PLASTIC	ALSH2525P	15.0	15.0	26.0	26.0	28.0	48.0
STANDARD HINGE 30X30	PLASTIC	ALSH3030P	17.5	17.5	29.5	29.5	28.0	48.0
STANDARD HINGE 30X30	ALUMINUM	ALSH3030A	17.5	17.5	29.5	29.5	28.0	48.0
STANDARD HINGE 30X40	PLASTIC	ALSH3040P	17.5	22.5	29.5	38.5	28.0	48.0
STANDARD HINGE 30X45	PLASTIC	ALSH3045P	17.5	25.0	29.5	43.5	28.0	48.0
STANDARD HINGE 30X45	ALUMINUM	ALSH3045A	17.5	25.0	29.5	43.5	28.0	48.0
STANDARD HINGE 40X40	ALUMINUM	ALSH4040A	22.5	22.5	38.5	38.5	28.0	48.0
STANDARD HINGE 40X60	PLASTIC	ALSH4060P	32.5	22.5	57.5	38.5	28.0	48.0
STANDARD HINGE 45X45	PLASTIC	ALSH4545P	25.0	25.0	43.5	43.5	28.0	48.0
STANDARD HINGE 45X45	ALUMINUM	ALSH4545A	17.5	17.5	29.5	29.5	28.0	48.0
STANDARD HINGE 45X60	PLASTIC	ALSH4560P	32.5	25.0	57.5	43.5	28.0	48.0
STANDARD HINGE 30X60	PLASTIC	ALSH3060P	17.5	32.5	29.5	57.5	28.0	48.0



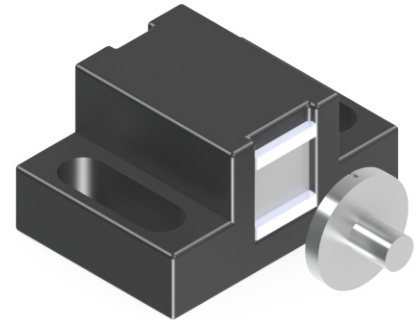
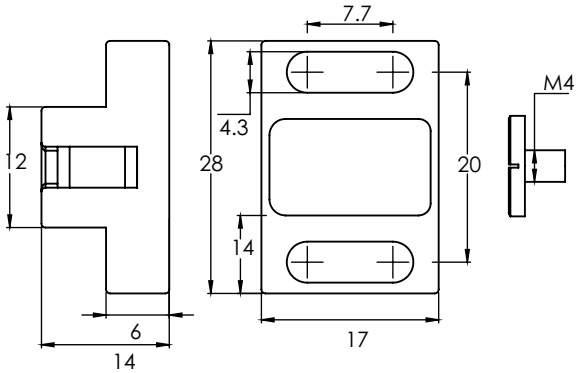
BALL CATCH

BALL CATCH	PART NUMBER
BALL CATCH	ALBC



MAGNETIC CATCH

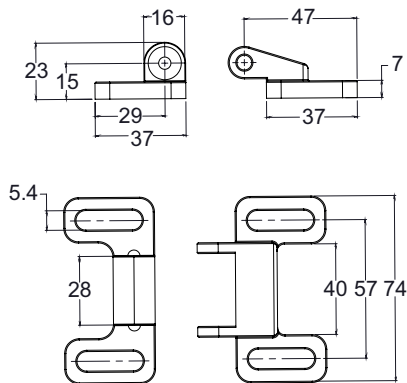
MAGNETIC CATCH	PART NUMBER
MAGNETIC CATCH	



DOUBLE BALL CATCH

MATERIAL: NYLON PA

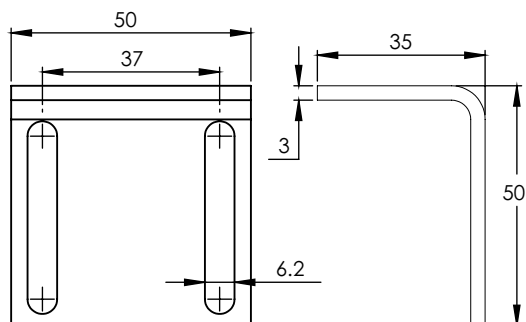
DOUBLE BALL CATCH	PART NUMBER
DOUBLE BALL CATCH	ALDBC



DOUBLE BALL CATCH BRACKET

MATERIAL: STEEL

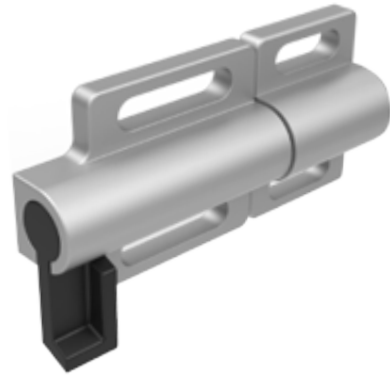
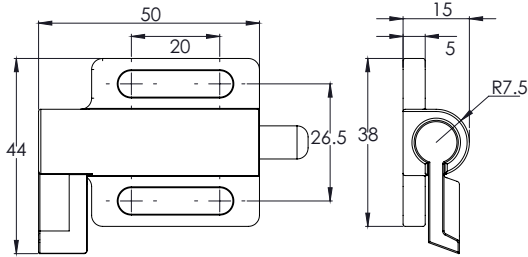
DOUBLE BALL CATCH BRACKET	PART NUMBER
DOUBLE BALL CATCH BRACKET	ALDBC B



DOOR LATCH

MATERIAL: DIE CAST ZINC

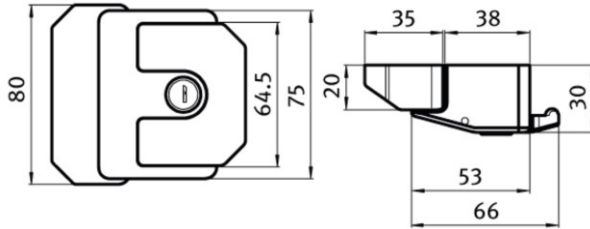
DOOR LATCH	PART NUMBER
DOOR LATCH	ALDL



LATCH

MATERIAL: DIE CAST ZINC

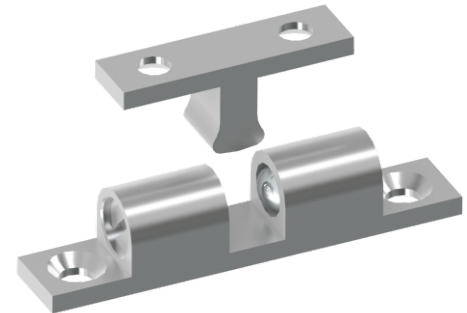
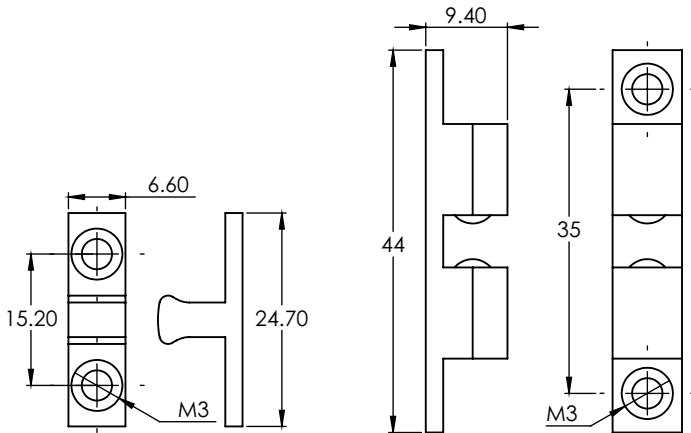
LATCH	PART NUMBER
LATCH W/KEY	ALLLWK



DOUBLE BALL CATCH MS

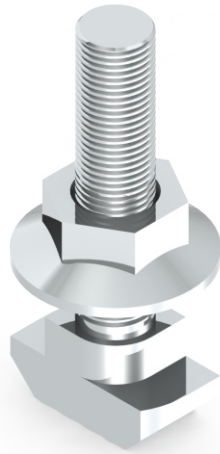
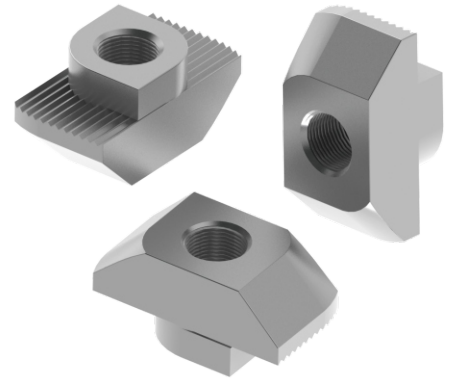
MATERIAL: STAINLESS STEEL

DOUBLE BALL CATCH MS	PART NUMBER
DOUBLE BALL CATCH MS	ALDBMS





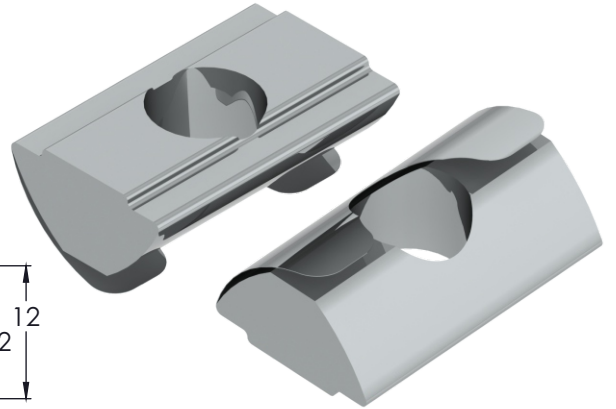
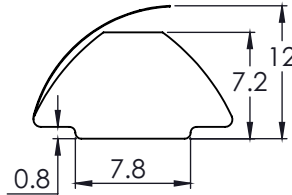
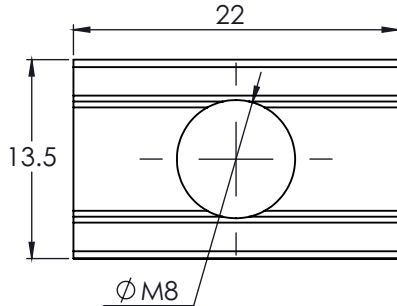
T-SLOT NUTS



ROLL IN T NUT WITH LEAF

MATERIAL: ZINC PLATED STEEL

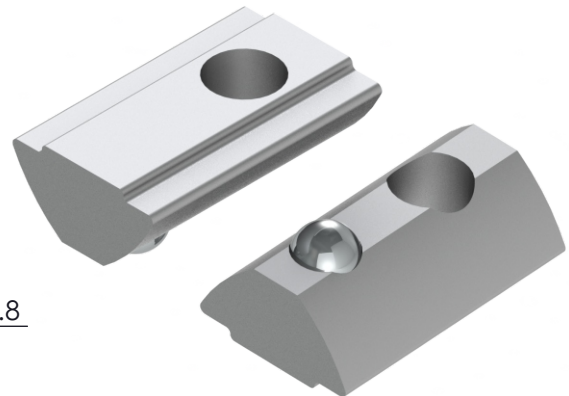
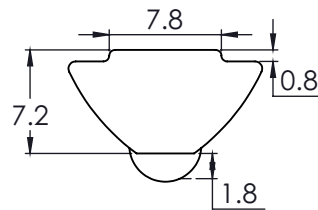
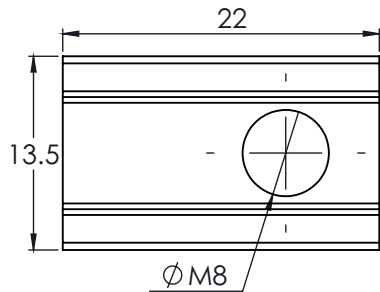
ROLL IN T NUT	SLOT	PART NUMBER
ROLL IN T NUT	10	ALRTNL10



ROLL IN T NUT WITH BALL

MATERIAL: ZINC PLATED STEEL

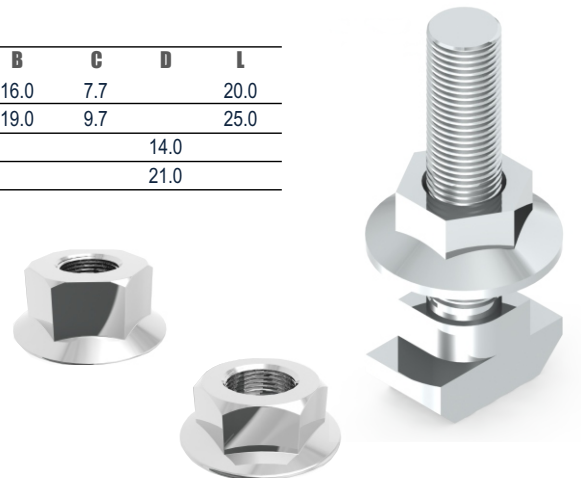
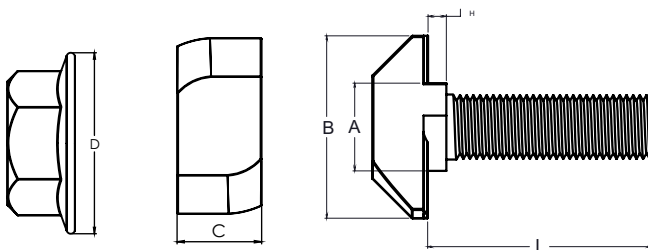
ROLL IN T NUT	SLOT	PART NUMBER
ROLL IN T NUT	10	ALRTNB10



T-BOLT AND HEX NUTS:

MATERIAL: STEEL

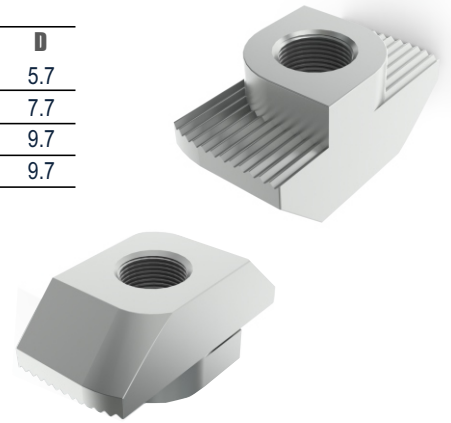
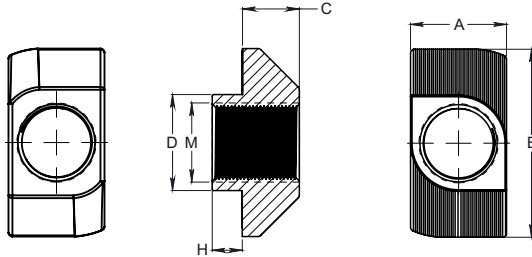
T-BOLT STEEL	PART NUMBER	M	H	A	B	C	D	L
T-BOLT 8 SLOT M6	ALTB08M6	M-6	3.0	7.7	16.0	7.7		20.0
T-BOLT 10 SLOT M8	ALTB10M8	M-8	3.0	9.7	19.0	9.7		25.0
HEX NUT M6	ALHNM6	M-6	6.0				14.0	
HEX NUT M8	ALHNM8	M-8	8.0				21.0	



T-NUT

MATERIAL: STEEL

T-NUT STEEL	PART NUMBER	M	H	A	B	C	D
T-NUT 6 SLOT M4	ALTN06M4	M-4	1.0	5.7	11.5	3.2	5.7
T-NUT 8 SLOT M6	ALTN08M6	M-6	1.5	7.7	16	4.5	7.7
T-NUT 10 SLOT M6	ALTN10M6	M-6	3.0	9.7	19	5.8	9.7
T-NUT 10 SLOT M8	ALTN10M8	M-8	3.0	9.7	19	5.8	9.7



SELF FORMING SCREW

MATERIAL: ZINC PLATED STEEL

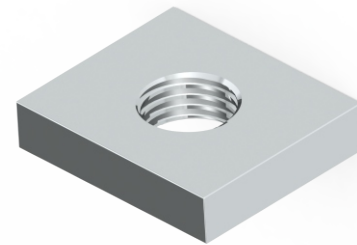
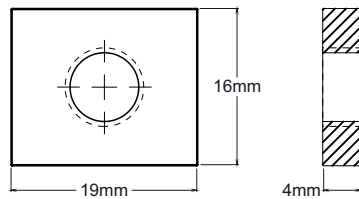
SELF FORMING SCREW	PART NUMBER
S12x30	ALSFS1230
S10x30	ALSFS1030
S8x25	ALSFS0820
S6x20	ALSFS0620



SQUARE NUT

MATERIAL: ZINC PLATED STEEL

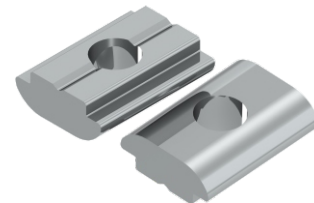
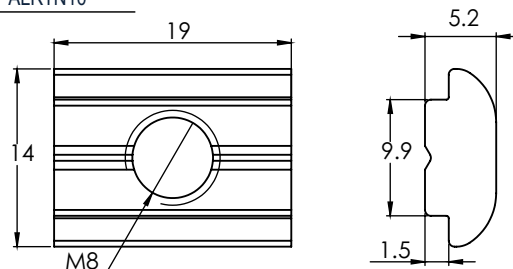
SQUARE NUT	PART NUMBER
SQUARE NUT M6	ALSNM6
SQUARE NUT M8	ALSNM8

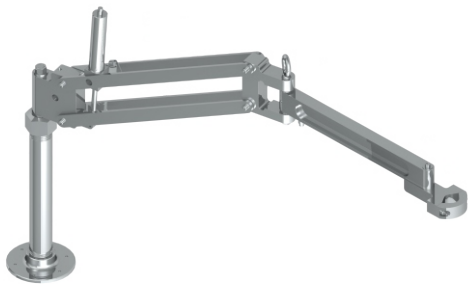


ROLL IN T-SLOT NUT

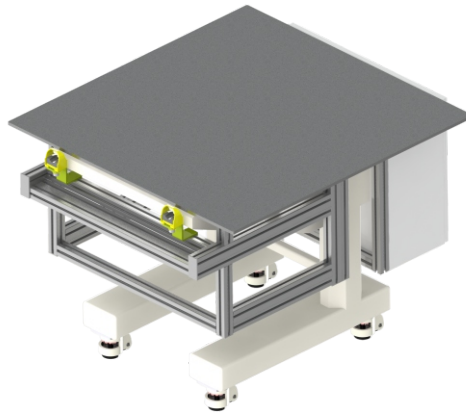
MATERIAL: ZINC PLATED STEEL

ROLL IN T NUT, STEEL	SLOT	PART NUMBER
ROLL IN T NUT	10	ALRTN10





ALK
PRODUCTS



PROFILE CONNECTOR PLATE

MATERIAL: A36

PROFILE CONNECTOR PLATE	PART NUMBER
PROFILE CONNECTOR PLATE	ALPCP

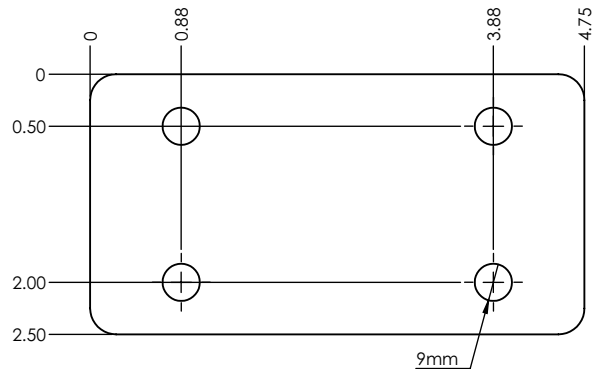


Plate binding profiles, useful for manufacture of security guards.

DOCUMENT HOLDER

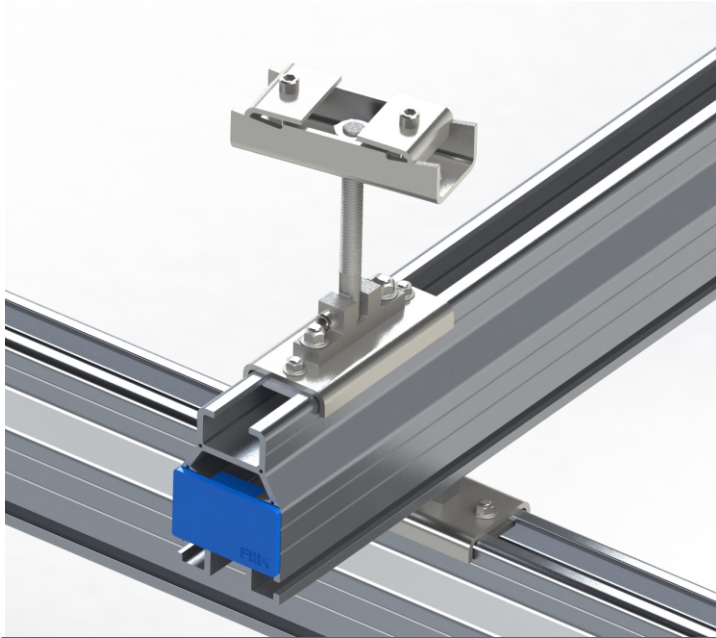
DOCUMENT HOLDER	PART NUMBER
DOCUMENT HOLDER	ALDH



DOCUMENT HOLDER

Easy access to information data, due to its mounting walls, machinery and equipment. This has hooks to 20 sheet protectors. Overall dimensions 58cmx36.5cm



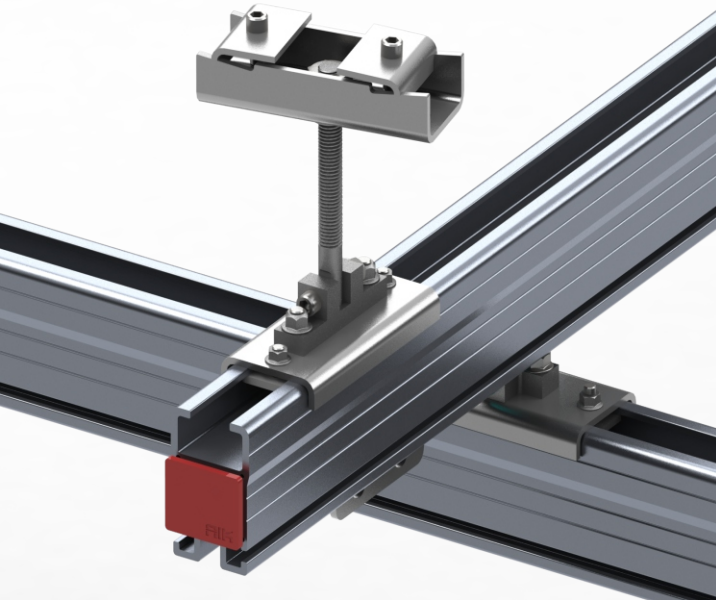


RAIL SYSTEM 1000

MATERIAL: ALUMINUM 6063 T5

LOAD: 1000 LB

RAIL SYSTEM 1000	PART NUMBER
RAIL SYSTEM 1000	ALK1000
TROLLEY 1000	ALKT1000
HANGER 1000	ALKH1000
HOIST TROLLEY 1000	ALKHT1000
END STOP	ALKES1000



RAIL SYSTEM 500

MATERIAL: ALUMINUM 6063 T5

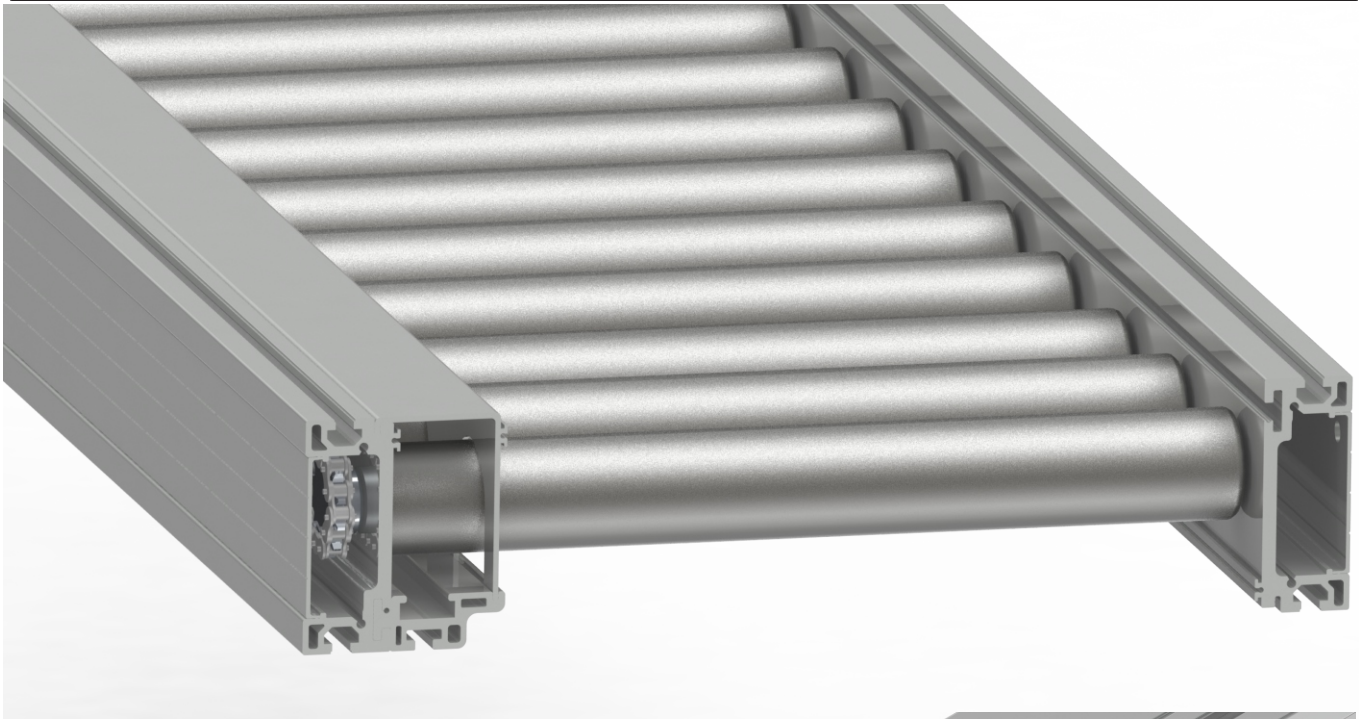
LOAD: 500 LB

RAIL SYSTEM 500	PART NUMBER
RAIL SYSTEM 500	ALK500
TROLLEY 500	ALKT500
HANGER 500	ALKH500
HOIST TROLLEY 500	ALKHT500
END STOP 500	ALKES500

RAIL SYSTEM

Made of aluminum makes for a light rail with a 6063 alloy and toughened 5 for greater strength and anodized for a smooth, clean and corrosion resistant finish. Spans of up to 6.1m.

If you require a specific defining color, please contact your dealer in Alumitek



ROLLER CONVEYORS

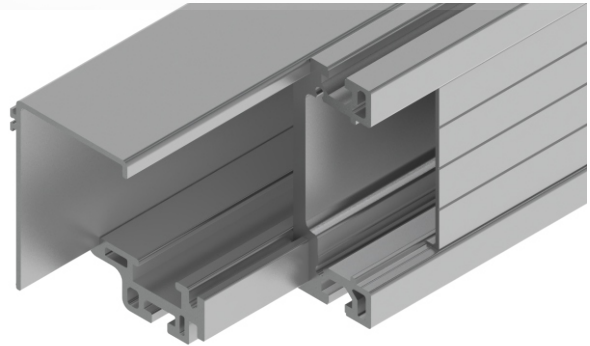
MATERIAL: ALUMINIM 6105 T5 & STAINLES STEEL

ROLLER CONVEYORS

PART NUMBER

ROLLER CONVEYORS

ALRC



ROLLER CONVEYOR

Is a mechanical device that moves materials from one location to another. They are gravity conveyors, dynamic conveyors or motor conveyors.

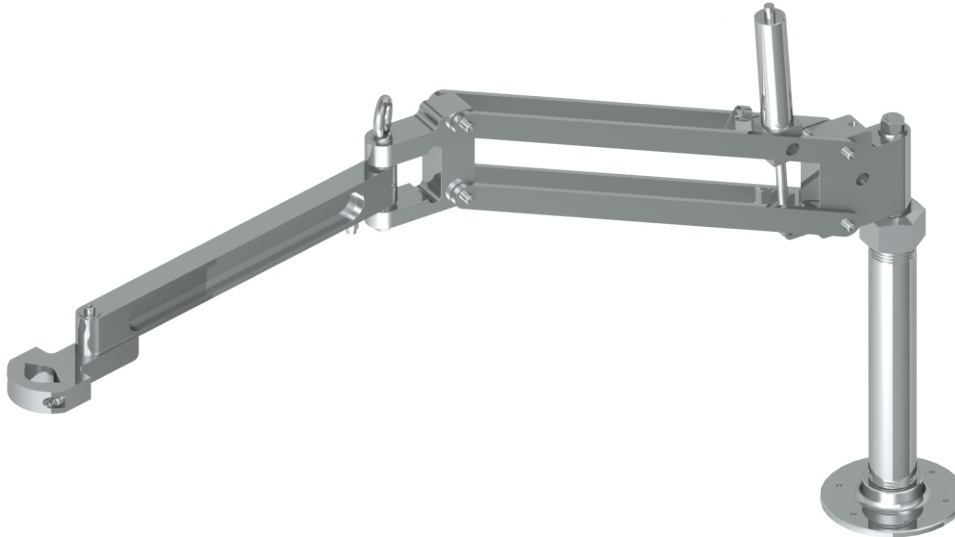
Ideal for handling heavy packages. Among its main features, are included: quiet operation, easy maintenance and the ability to be reversible when required. Used in manufacturing, assembly processes and logistics systems for the handling of boxes, trays, pallets, packages etc.

The roller conveyors are manufactured according to the technical specifications of the customer, free choice of dimensions, such as height and width.



ERGONOMIC ARM

ERGONOMIC ARM	WEIGHT LB	MIN REACH IN	MAX REACH IN	PART NUMBER
ERGONOMIC ARM	24.00	11.75	37.25	ALEA



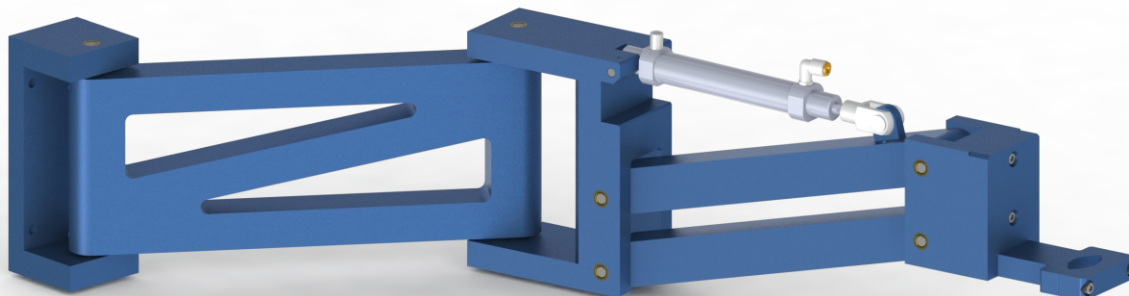
Torque arms are used to "absorb and Eliminate" the reaction in the assembly process. For every action there is a direct and opposite reaction. That means when an operator tries to hold a right angle nutrunner and apply torque, it will twist his arm off.

The easyergonomic benefit is on the torque arm.

Eliminating weight of the tool, offers ergonomic benefits and increases the productivity, reducing operator's fatigue and risk of injury due to stress.

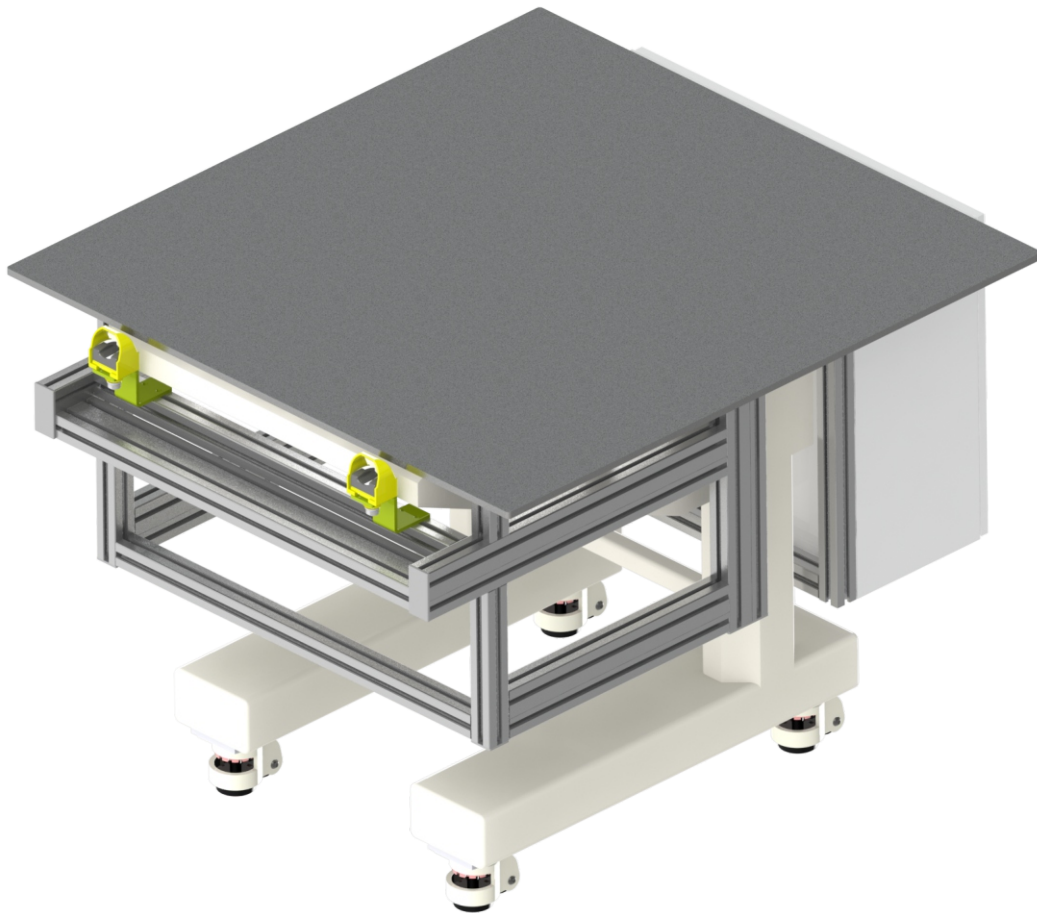
ERGONOMIC ARM HEAVY DUTY

ERGONOMIC ARM	WEIGHT LB	MIN REACH IN	MAX REACH IN	PART NUMBER
ERGONOMIC ARM	29.00	15.75	38.25	ALEAHD



ERGONOMIC WORK STATION

ERGONOMIC WORK STATION	PART NUMBER
ERGONOMIC WORK STATION	ALEWS



ERGONOMIC WORK STATION 500LB

Useful material conveyor can be used as a table feeder production line.

Level is controlled electrically by motor.

Structural aluminum construction makes it light.

Polyurethane wheels for long life.





01 800 225 00 80

WWW.ALUMITEK.NET

Contact Sales

Phone: +52(844) 415.5845

Email: info@alumitek.net

